

Preparation

Unpack the unit, and check the parts supplied against the packing list enclosed. Familiarize yourself with the components, their locations once installed, and the sequence of assembly by referring to the contents of this manual. Pay special attention to the orientations of the bearings.

Smooth the shafts, and universal sleeves with emery cloth if needed, and test the fit of all bearings and universals before you attempt to install them. Use a good anti-seize compound on all connections involving the auger shafts. This will aid assembly, and will make disassembly much easier if repairs are required at a later date.

Protect the drapers with a sturdy surface, such as sheets of plywood to prevent damage to the drapers while positioning and lifting the auger sections.

Directions

For the purposes of this manual, "front" refers to the cutter-bar side of the header, "back" refers to the side of the unit that attaches to the combine. "Left," and "right" are as viewed from the back of the unit facing the front.

Assembly

Lower the header to the ground or onto stable blocks, whichever will provide the most comfortable working height. Lower the reel to the stops, and move it fully forward. If you elect to use a front-end loader or other mobile hoisting device to lift the augers into place, dismount the header from the combine to provide clear access to the rear of the header. (See the header operator's manual for instructions.)

If you do not have a hoisting device, set (2) 2x4's across the main tube of the header, and across two tine arms of the reel, and have nylon straps or small come-alongs to lift the augers into place. Move one 2x4 at a time, as necessary for each lift.

The instructions below detail assembling and hanging the cross auger in segments; however, you may elect to assemble the cross auger on the draper, and lift it into place as a unit. In either case, it is important to leave all hangers and brackets loose until the cross auger is in position and centered.

When installing the universal joints, it will be helpful to wedge the slot in the sleeve open slightly until it is in place.

Refer to the drawing on the next page:

1. Attach the hanger bracket to the left reel arm, and secure with bolts, washers, and nuts.
1. Clamp the inboard end of the bracket to the reel arm cross-brace, using the flat bracket, two bolts, washers, and nuts. ***Do not tighten!***

2. Attach the crescent shaped bracket to the hanger bracket using two bolts, nuts and washers. Attach the vibration damping bolt. **Do not tighten!**
3. Attach the main tube hangars using long bolts, washers and nuts. **Do not tighten!**
4. Mount the hydraulic motor, and the flow control onto the crescent-shaped bracket.
5. Insert a square key, tap it into place, and slide the universal joint onto the shaft, **grease zerk facing outward, toward the motor**, and secure with a bolt, washer, nut and set screw.
6. Insert a second square key, tap it into place, and slide the collar over the end of the auger as far as possible, then slide the shaft of the auger into the universal, and secure it with a bolt, washer, nut, and set screw.
7. Slide the collar out to cover the universal and secure it to the end of the auger housing with (4) tech screws.

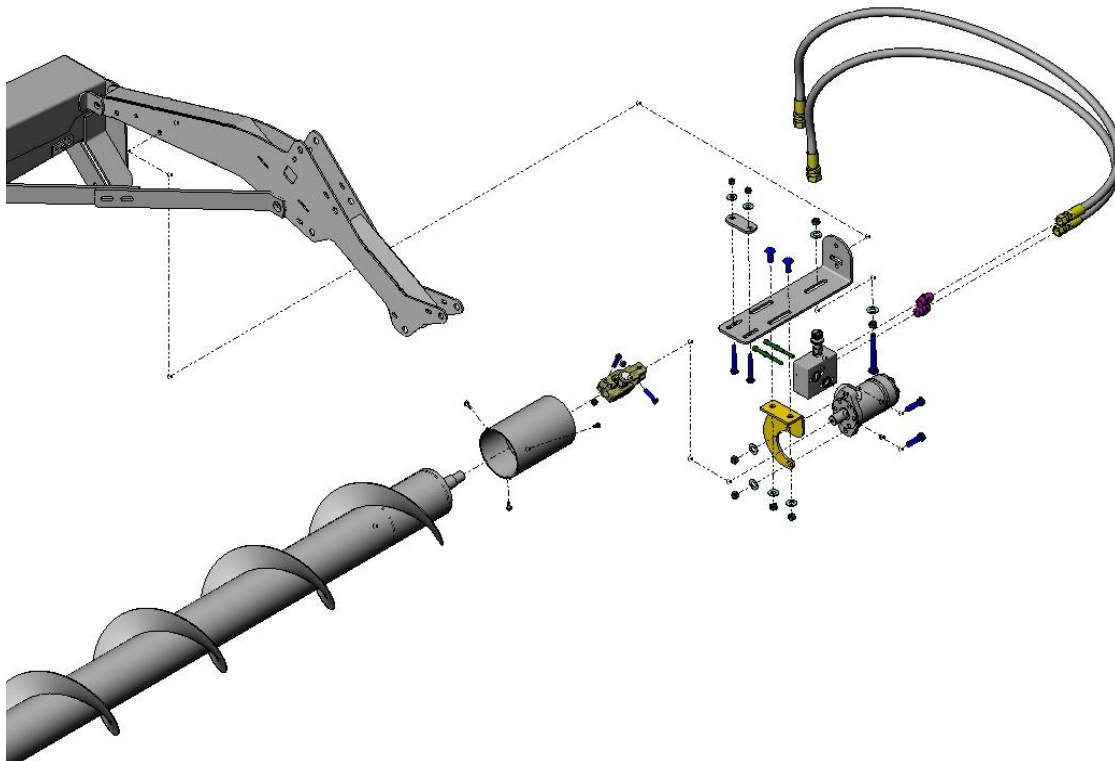


Illustration 1: End Hanger Bracket

Refer to the diagram below:

8. Collect the parts required for hanging the center-left end of the cross auger from the bracket. Assemble and attach the jack, and brackets as shown.
9. Slide the bushing and bearing onto the shaft of the center auger, wide flange facing the right end of the header.
10. Attach the universal to the left side shaft with a square key, tap it into place, and secure using a bolt, washer, and nut.
11. Raise the end of the right hand auger into position, and insert it into the universal with a square key, tapped into place. Secure with a bolt, washer, and nut.
12. Clamp the bearing to the jack base, and secure the cover over the universal.
13. Attach the jack to the main tube bracket, using two long bolts, nuts and washers. **Do not tighten!**

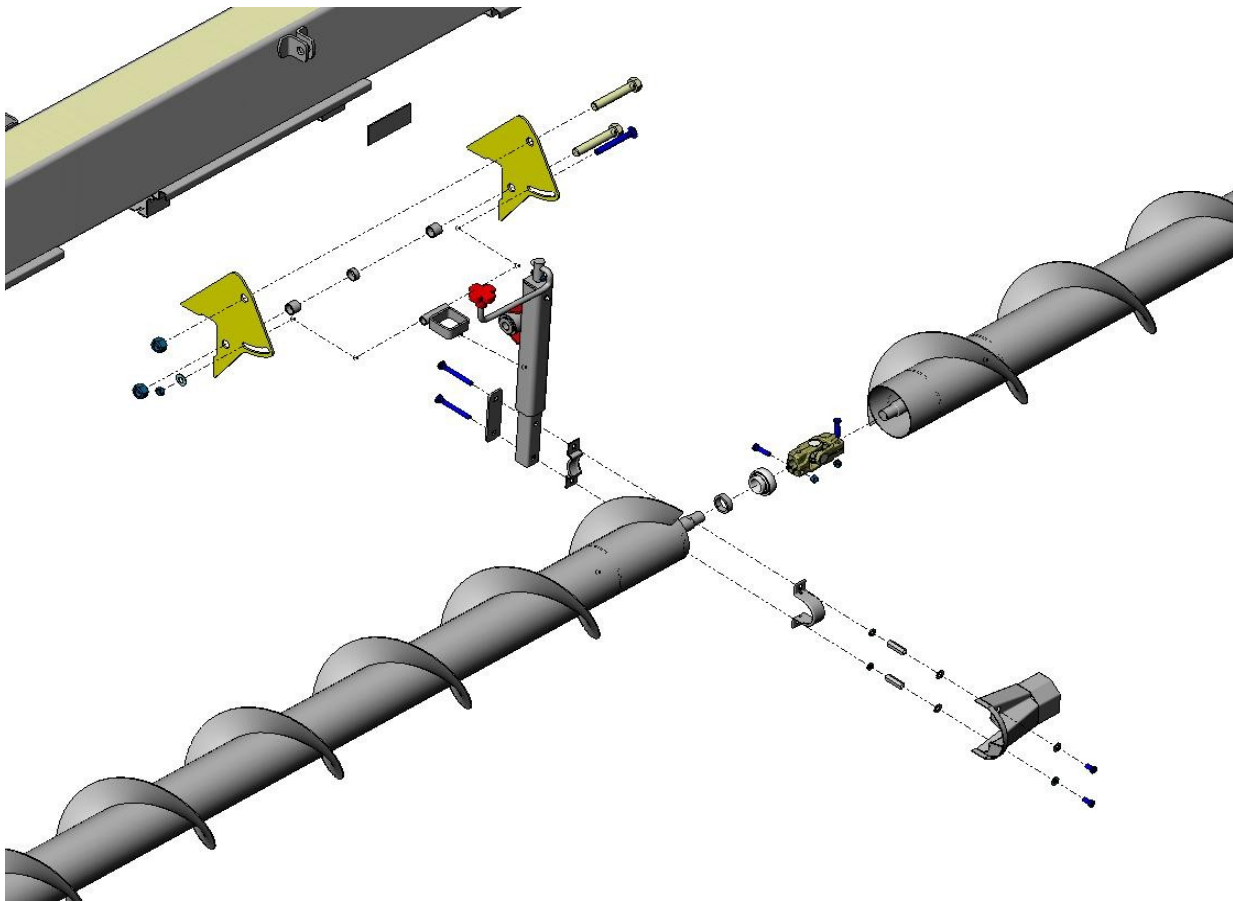


Illustration 2: Left Side Center Auger Mount - Exploded View

Refer to the diagram below:

Repeat these instructions for the right-center jack mount, ensuring you place the bushing, and bearing on the centre auger shaft, so that each end of the center flight of the auger has a bearing. Take careful note of the orientation of the bearing, wide flange facing inward toward the center auger.

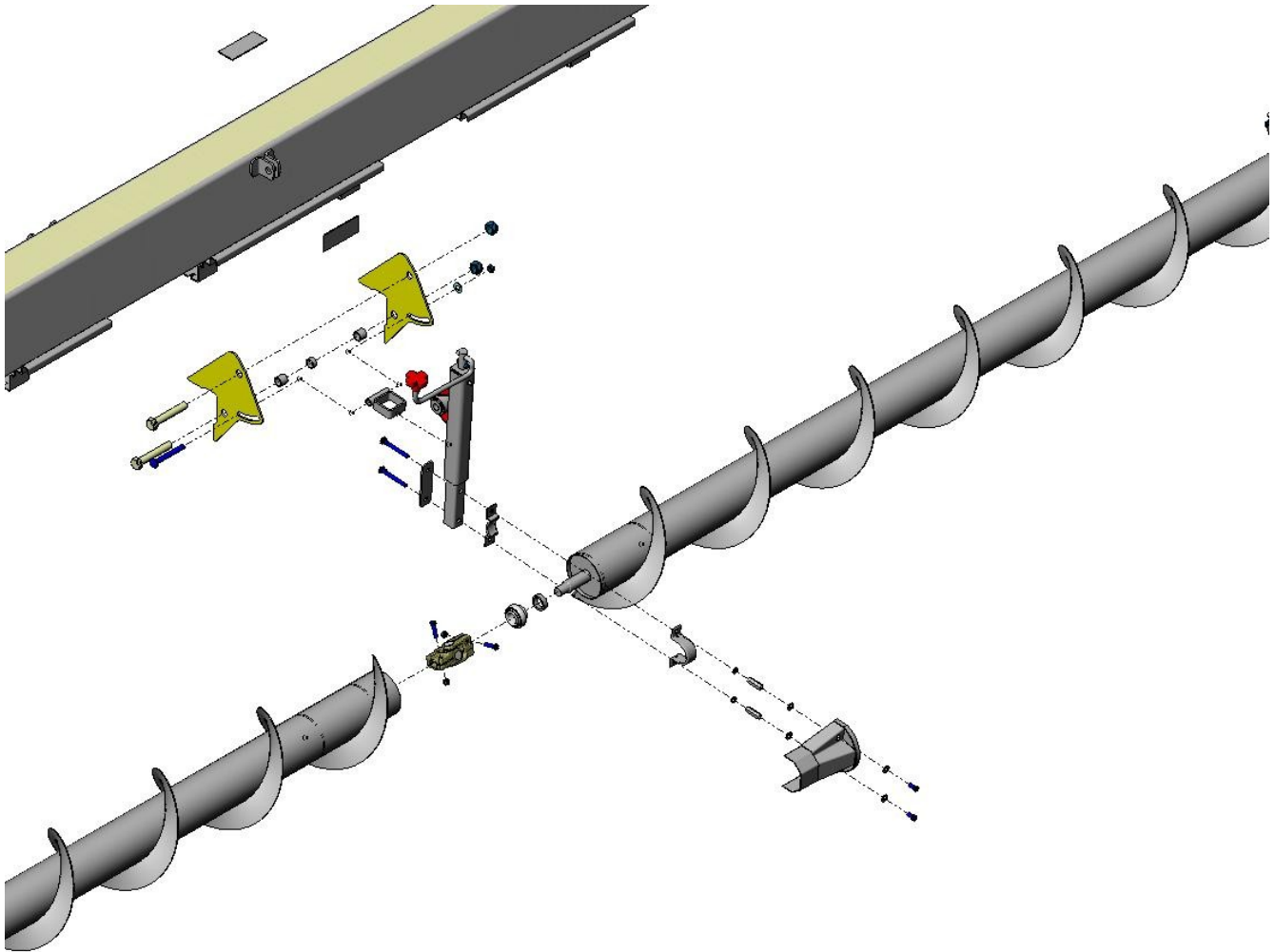


Illustration 3: Right Side Center Auger Mount - Exploded View

Refer to the diagram below:

5. Collect the parts for assembling the right hand hanger, and bearing mount.
6. Install the bracket and secure it to the cross member with the flat clamp.
7. Install the bearing hanger.
8. Slide one half of the bearing housing over the shaft, and then slide the bearing onto the shaft, wide flange toward the auger (left). Slide the second half of the bearing housing into place on the bearing.
9. Raise the auger into position, and secure both sides of the bearing housing to the hanger.
10. Center the auger, straighten and secure all hangers and brackets. Set, and secure the vibration damping bolt against the outer collar of the hydraulic motor.

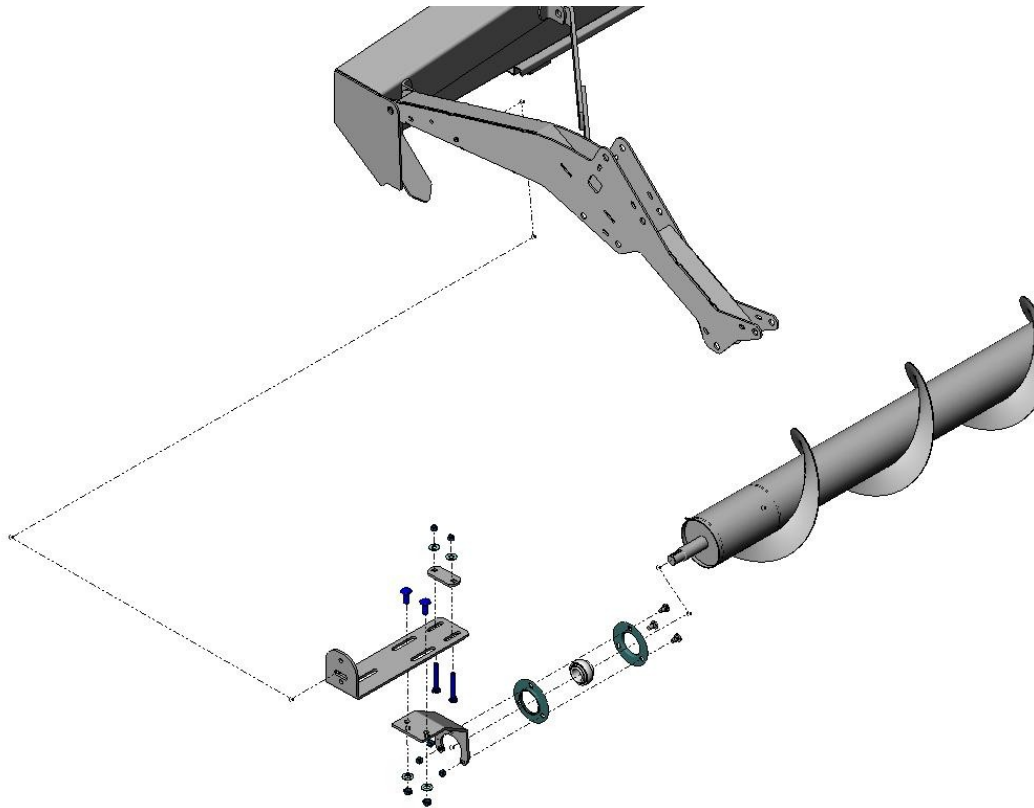


Illustration 4: Right hand Auger Mount

11. Disconnect the return line from the left hand draper motor.
12. Attach the pressure line from the cross auger motor to this port.
13. Connect the return line from the cross auger motor to the header return line.

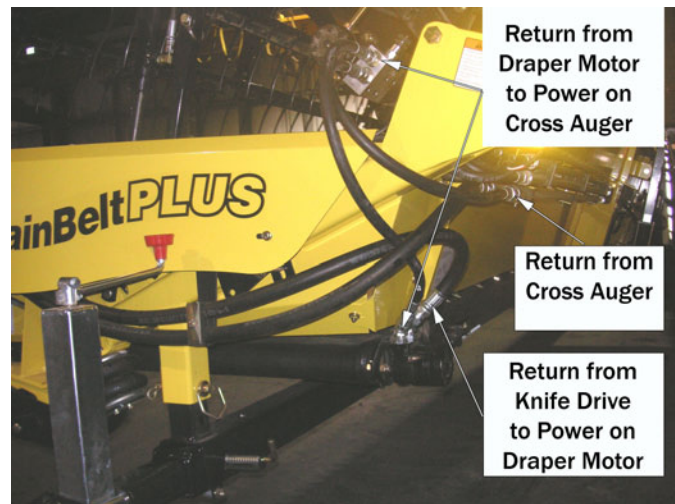


Illustration 5: Hydraulic Hose Routing

14. Open the valve slightly on the cross-auger flow control, start the combine, and test the assembly.
15. Adjust the speed of the cross auger so that the flighting will move the crop with, or slightly faster than, the drapers. Be prepared to change this setting from time to time, as crop conditions dictate.