

***Production Header  
and  
Swather  
Hydraulic Fore-Aft  
Installation Instructions***

## Preparation

1. Check the parts you have received against the packing list that was enclosed with them.
2. Organize, and familiarize yourself with the parts. Identify the parts shown in the following illustrations. Lower the header/swather to the ground, or onto blocks, and lower the reel to the stops. If necessary, tie the reel back to prevent it from slipping forward.

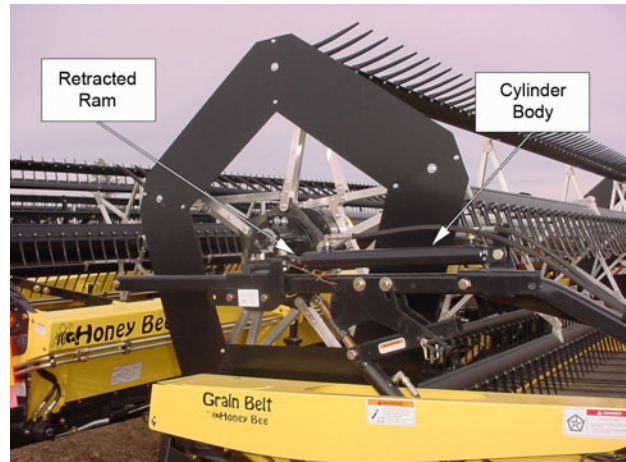
### **Directions**

For the purposes of this manual, left and right are defined as being as viewed from the rear, of the unit, front is the cutter bar, and rear is the area where the unit attaches to the swather or combine.

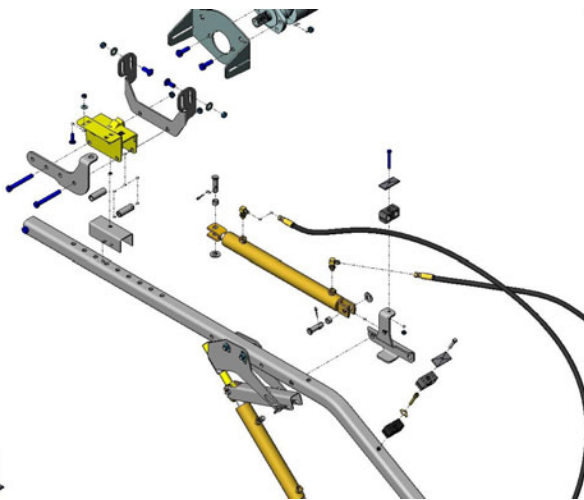
### **Split Reel**

**Split Reel:** Hydraulic cylinder mounted at rear of left and right reel arms, and at front of center arm.

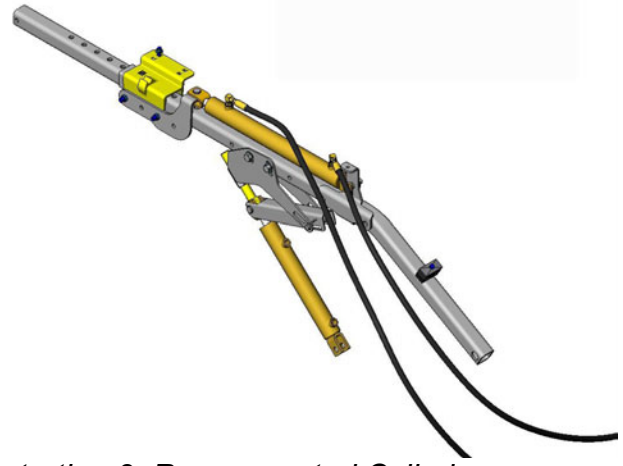
Note the smaller bracket attached to the reel hub mount, and the retracted cylinder ram.



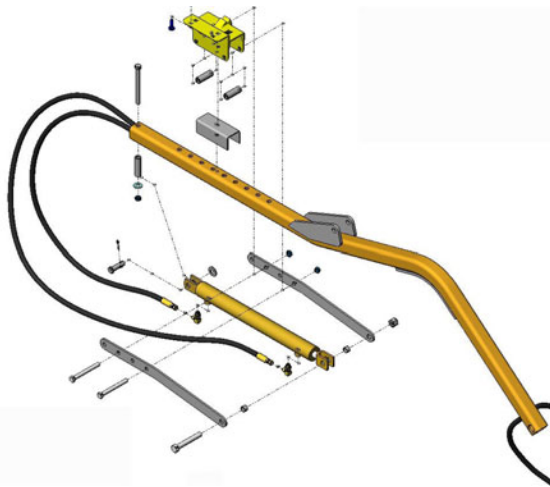
*Illustration 1: Cylinder body mounted at rear of arm*



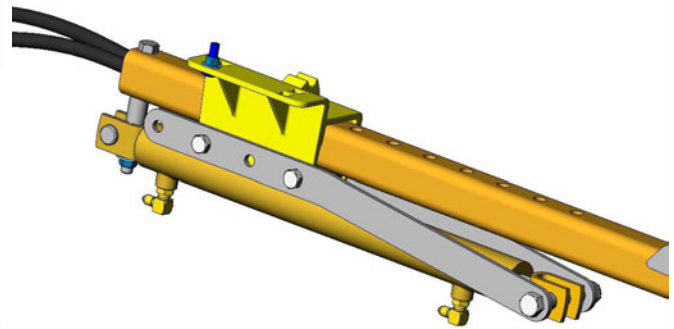
*Illustration 2: Rear-mounted Cylinder - Exploded View*



*Illustration 3: Rear-mounted Cylinder - Assembled*



*Illustration 4: Forward mounted Cylinder - Center Arm - Exploded View*

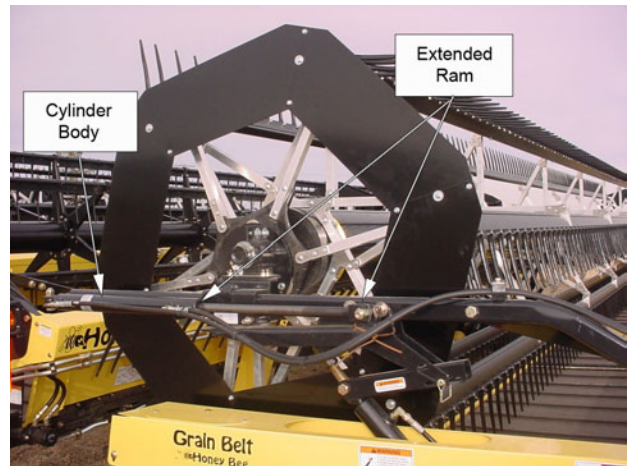


*Illustration 5: Center Arm Cylinder - Assembled*

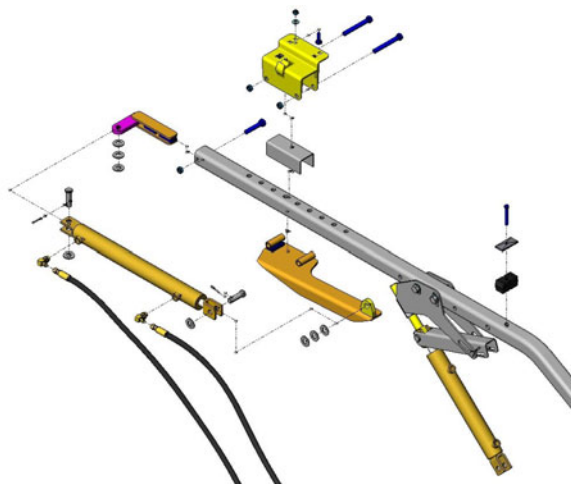
**Solid Reel:**

Hydraulic cylinder body mounted at front of left reel arm, and to the rear on the right reel arm.

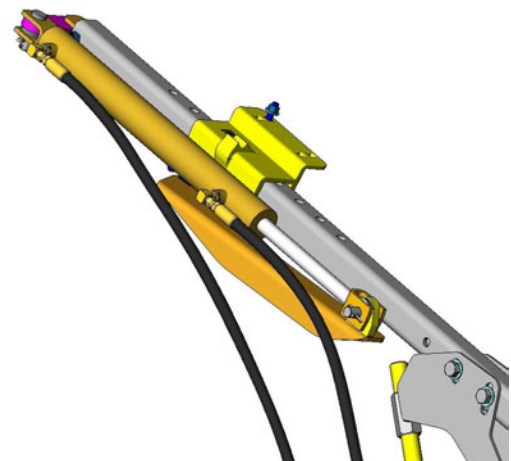
Note the elongated mounting bracket attached to the reel hub mount, and the extended ram on the cylinder.



*Illustration 6: Cylinder body mounted at front of arm*



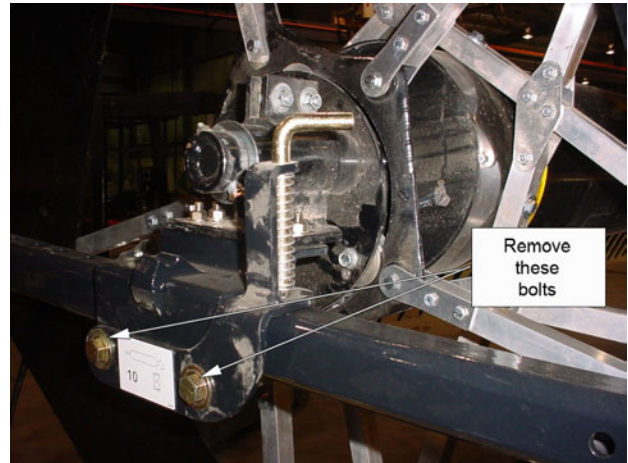
*Illustration 7: Left Arm - Forward Mounted Cylinder - Exploded View*



*Illustration 8: Left Arm - Forward Mounted Cylinder - Assembled*

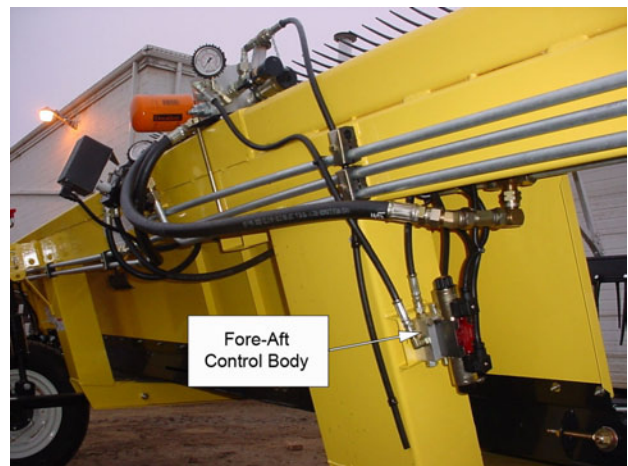
## **Installation**

1. Remove the manual locking mechanism.



*Illustration 9: Removing the manual bracket*

2. Install the new brackets as shown in Illustrations 1 - 8, as the parts supplied for your unit dictate.
3. Refer to your Operator's Manual, shipped with the header/swather, and locate the hydraulic schematic for the fore and aft circuit that matches your unit and reel type.
4. Route the hoses as required, and install the control block on the left side of the center opening. You should find a welded bracket for this purpose in this location.



*Illustration 10: Swather Fore-Aft Control Body location*

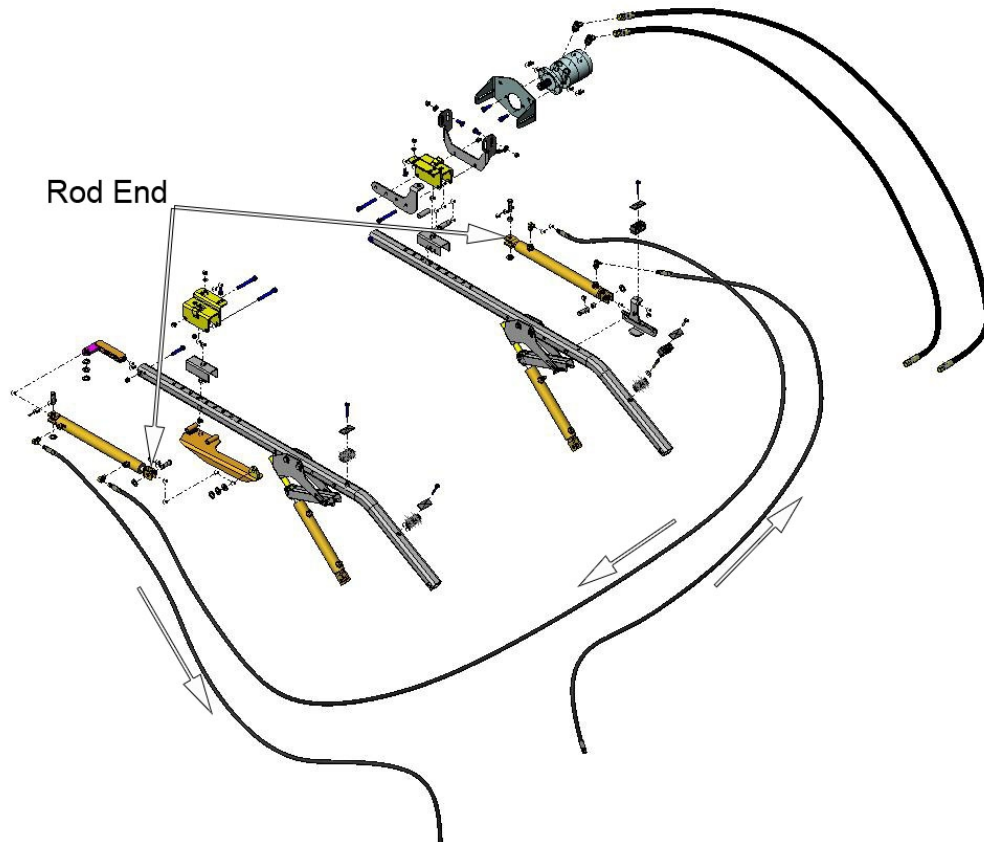
5. For combine header installations, it is important to ***ensure you have a kit that is specifically matched to your combine.***

The hydraulic control body may, or may not be required, depending upon the model of combine. If a control body has been supplied with your kit, it will mount in the location shown here, to the left of the feeder house opening.



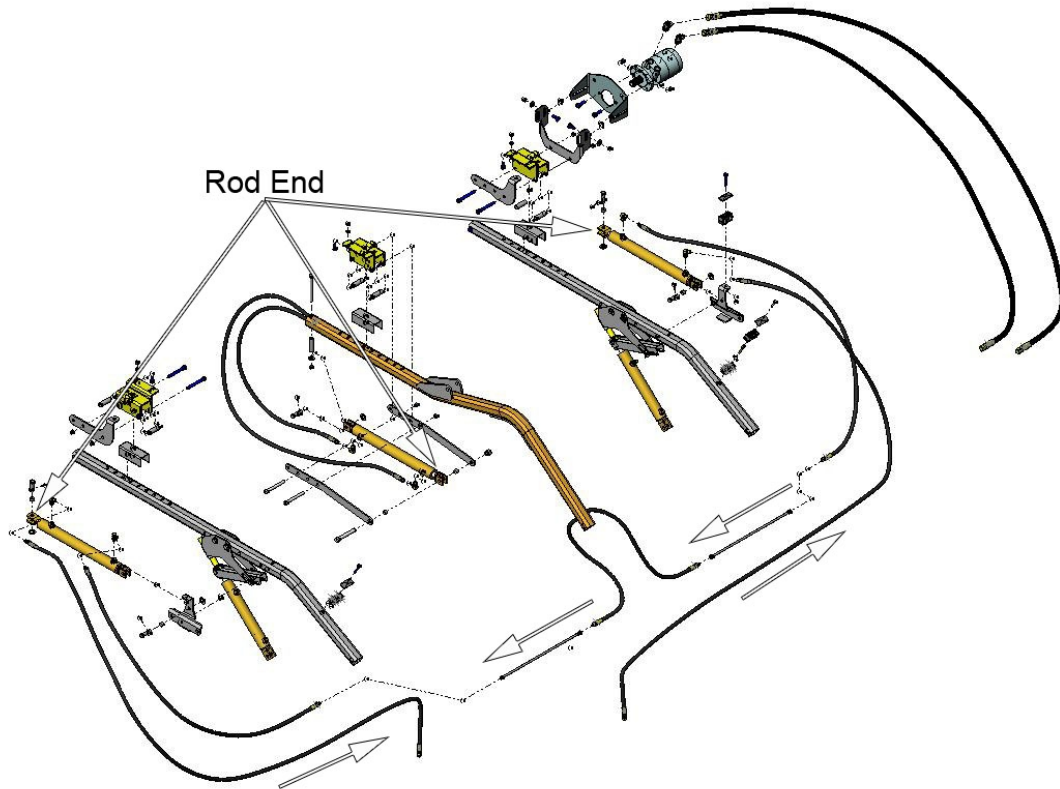
*Illustration 11: Header Fore-Aft Control Body Location*





*Illustration 12: Solid Reel Oil Flow Diagram*

**NOTE:** Cylinders mounted with the fixed end to the front of the reel arm (Illustration 4, Illustration 5, Illustration 7, and Illustration 8) are plumbed with the power line to the rod end, and the return attached to the fixed end of the cylinder.



*Illustration 13: Split Reel Oil Flow Diagram*

**NOTE:** *Cylinders mounted with the fixed end to the front of the reel arm (Illustration 4, Illustration 5, Illustration 7, and Illustration 8) are plumbed with the power line to the rod end, and the return attached to the fixed end of the cylinder.*

6. Refer to your Operator's Manuals, and locate the wiring schematic for your unit. Route the wires as required, and insert the pins in the multi-plug as shown in that diagram.
7. Inspect the assembly to ensure everything is correctly installed, and tightened.
8. Start the unit, and test the operation of the controls. Thoroughly accustom yourself to their operation before beginning field work.