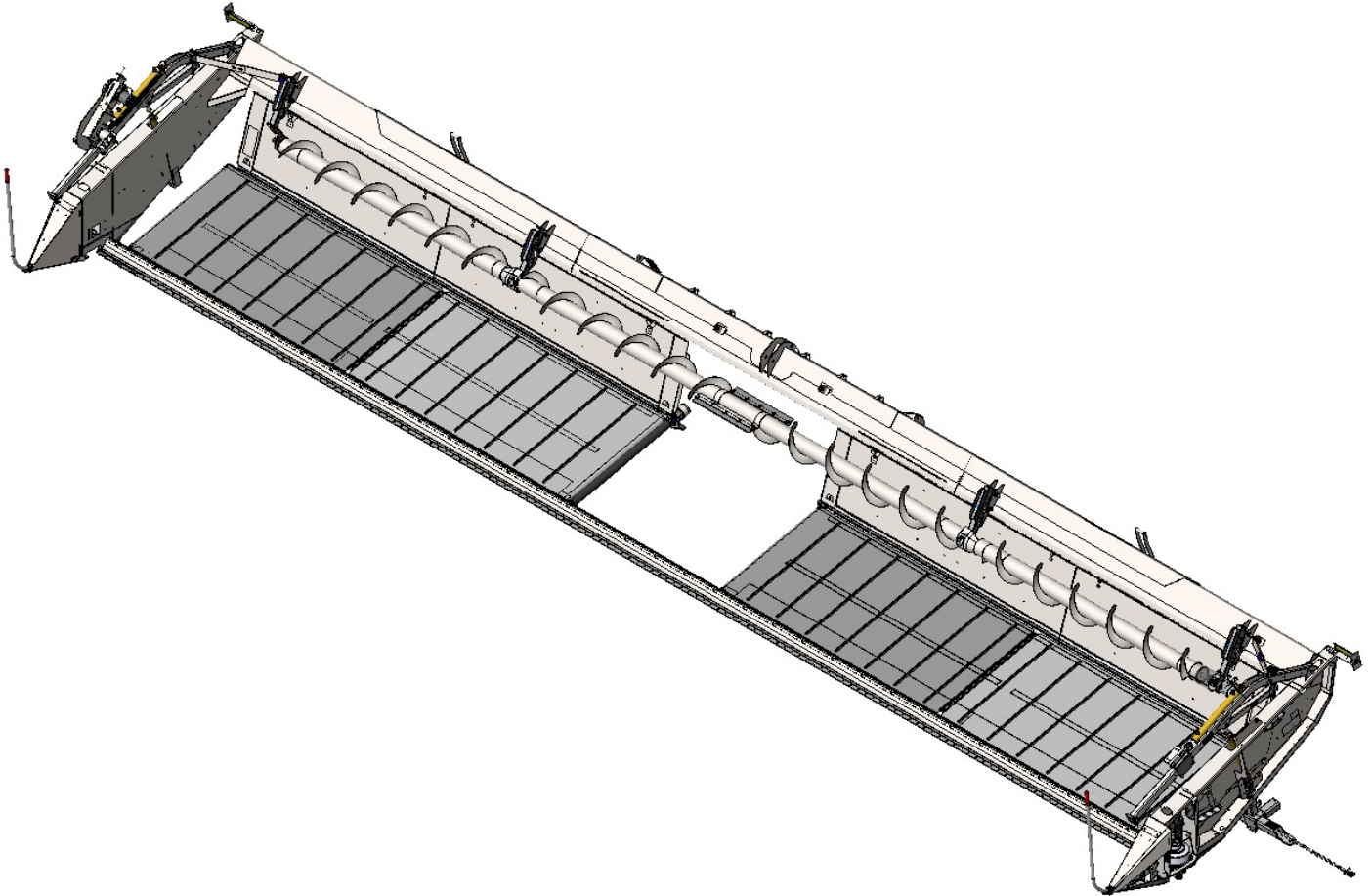


CROSS AUGER KIT 2014 4000 SRS



APPLIES TO KIT'S

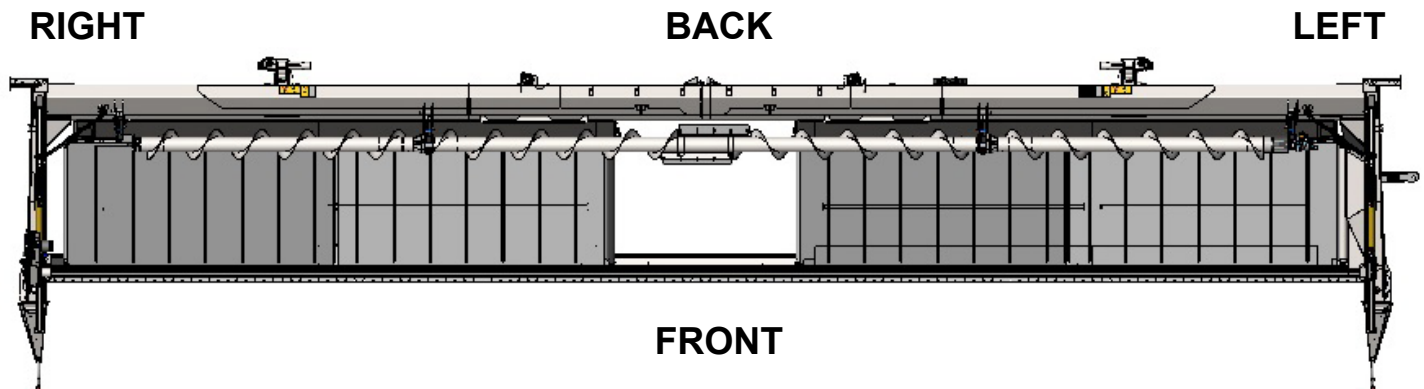
**XAUG ASSY-36' HDR Y-E
XAUG ASSY-40' HDR Y-E
XAUG ASSY-45' HDR Y-E**

INSTALLATION MANUAL - REVISION 1.0 - 94779

PREPARATION: The kit contains the mounts, hardware, and hydraulic components common, and size specific in order to install Cross Augers on the table. Familiarize yourself with the components, their locations once installed, and the sequence of assembly by referring to the contents of this manual. Pay special attention to the orientation of the bearings.

ATTENTION: Protect the Drapers with a sturdy surface, such as sheets of plywood to prevent damage to the Drapers while positioning and lifting the Cross Auger Sections.

Note Table Orientation in Top View below.



Before Starting Assembly:

1. Lower the header to the ground or onto stable blocks, whichever will provide the most comfortable working height.
2. If you are using a Short Reach mechanical lifting device you may want to dismount the table from the Power Unit so the lifting device can reach the installation location on the table.
3. Lower the Reel, and move it forward as far as it can go. Pay close attention to the relationship of the Reel Arms to the Cross Auger.
4. Smooth Cross Auger shafts, and Universal Joint sleeves, with Emery Cloth.
5. Test fit U-Joints, and bearings onto Cross Auger shafts. It may be helpful to wedge the slot in the sleeve open slightly until it is in place.
6. Check Hydraulic Fittings for Petroleum Based Thick Lubricant on the Face Seal O-Rings. The Lubricant holds the O-Ring in place during installation, and lubricates it during final torquing. If no Lubricant is present then apply a small amount on to the face of the fitting so it holds the O-Ring in place.
7. Use two pieces of flat material (e.g. plywood) for each auger section to hold it away from the Back Panels until all the fasteners are tightened.

Kit Contents

- Parts Common to all sizes.

Item #	Description	QTY
1	BOLT 3/8 X 3/4 UNC GR5	4
2	BOLT 3/8 X 1 UNC GR5	10
3	BOLT 3/8 X 1-1/2 UNC GR5	6
4	BOLT 1/2 X 1-3/4 UNC GR5	2
5	BOLT 1/2 X 4 UNC GR5	4
6	BOLT 3/8 X 1 UNC CARR GR5	7
7	BOLT 3/8 X 1-1/4 UNC CARR GR5	4
8	TEK SCREW 1/4 X 1 S/DRLG-WSHR	3
9	WASHER FLAT 3/8	14
10	WASHER FLAT 1/2	8
11	WASHER SAE 3/8	4
12	WASHER LOCK 3/8	4
13	NUT 1/2 UNC C/LOCK	14
14	NUT 3/8 UNC C/LOCK	23
15	BOLT 1/2 X 3 UNC CARR FULL GR5	4
16	PILLOW BLOCK SET-L/D-2PC	2
17	FLANGETTE-3 BOLT	2
18	KEY 1/4 X 1-1/4	5
19	NUT RODCPLG 3/8 UNC	4
20	BOLT 1/2 X 4 UNC CARR FULL GR5	4
21	BEARING-COMMON-3 SEAL-NO SETS	3
22	U-JOINT-1" YOKE	3
23	WASHER 3/8 SEAL BONDED	4
24	MOTOR HYDRAULIC-WHITE 115CC	1
25	NEEDLE VALVE-#10 CAVITY	1
27	ELBOW 10MB - 10MF - 45	2
28	WASHER 1/2 X 1.2730D CONTACT BVLL	4
29	LOCK PIN-BENT-1/2 X 2-1/2 W/CLIP	4
30	SHIELD-CENTER CROSS AUGER-PLASTIC	1
31	DECAL-GREASE 50HR 04	3
32	PADDLE-CENTRE CROSS AUGER-UHMW	2
33	SHIELD-CROSS AUGER-PLASTIC	2
34	HOSE WRAP-SPIRAL	1
35	CROSS AUGER SUB-ASSEMBLY-179-3/4" CENTER	1
36	HOSE HH08 18 10MF - 10FFX TCVR	1
37	HOSE HH08 67 10FFX - 10FFX TCVR	1
38	ADJUSTER BRACKET WELDMENT-CROSS AUGER	4
39	MOTOR PLATE-CROSS AUGER-FOMED	1
40	MOUNT PLATE-CROSS AUGER SUPPORT-FORMED	1
41	SLIDE TUBE WELDMENT-CROSS AUGER	4
44	SPACER-1.66 X 1.278 X 3/4 PLATED	2
45	SPACER-.840 X .546 X 3 PLATED	4
46	SPACER-.840 X .546 X 2 PLATED	4

KIT CONTENTS (CONTINUED)

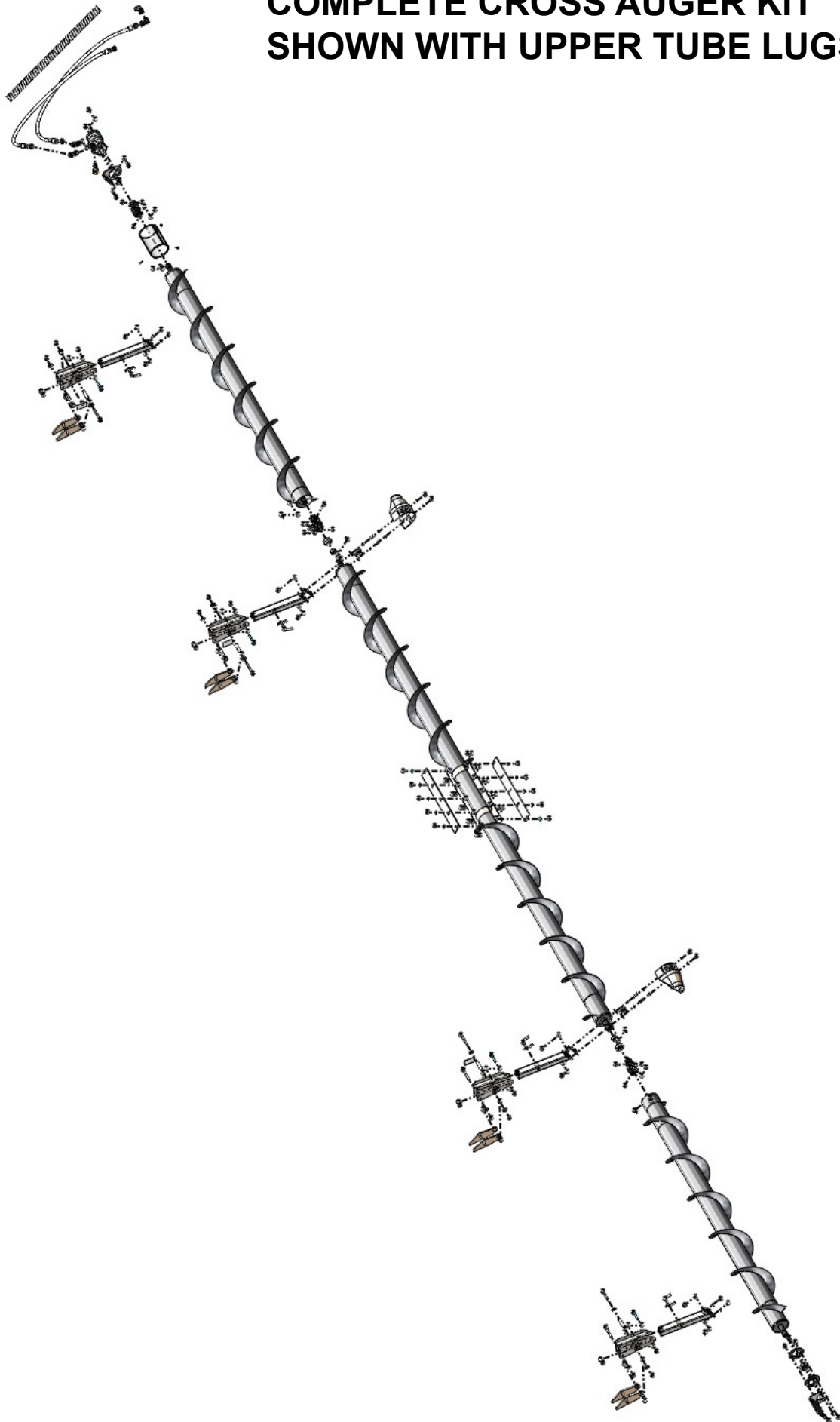
- Parts Specific to Table Size

Item #		Description	QTY
36' CNH SWATHER			
42		CROSS AUGER WELDMENT-90-1/2" RH	1
43		CROSS AUGER WELDMENT-90-1/2" LH	1
40' CNH SWATHER			
42		CROSS AUGER WELDMENT-114-1/2" RH	1
43		CROSS AUGER WELDMENT-114-1/2" LH	1
45' CNH SWATHER			
42		CROSS AUGER WELDMENT-144-1/2" LH	1
43		CROSS AUGER WELDMENT-144-1/2" RH	1

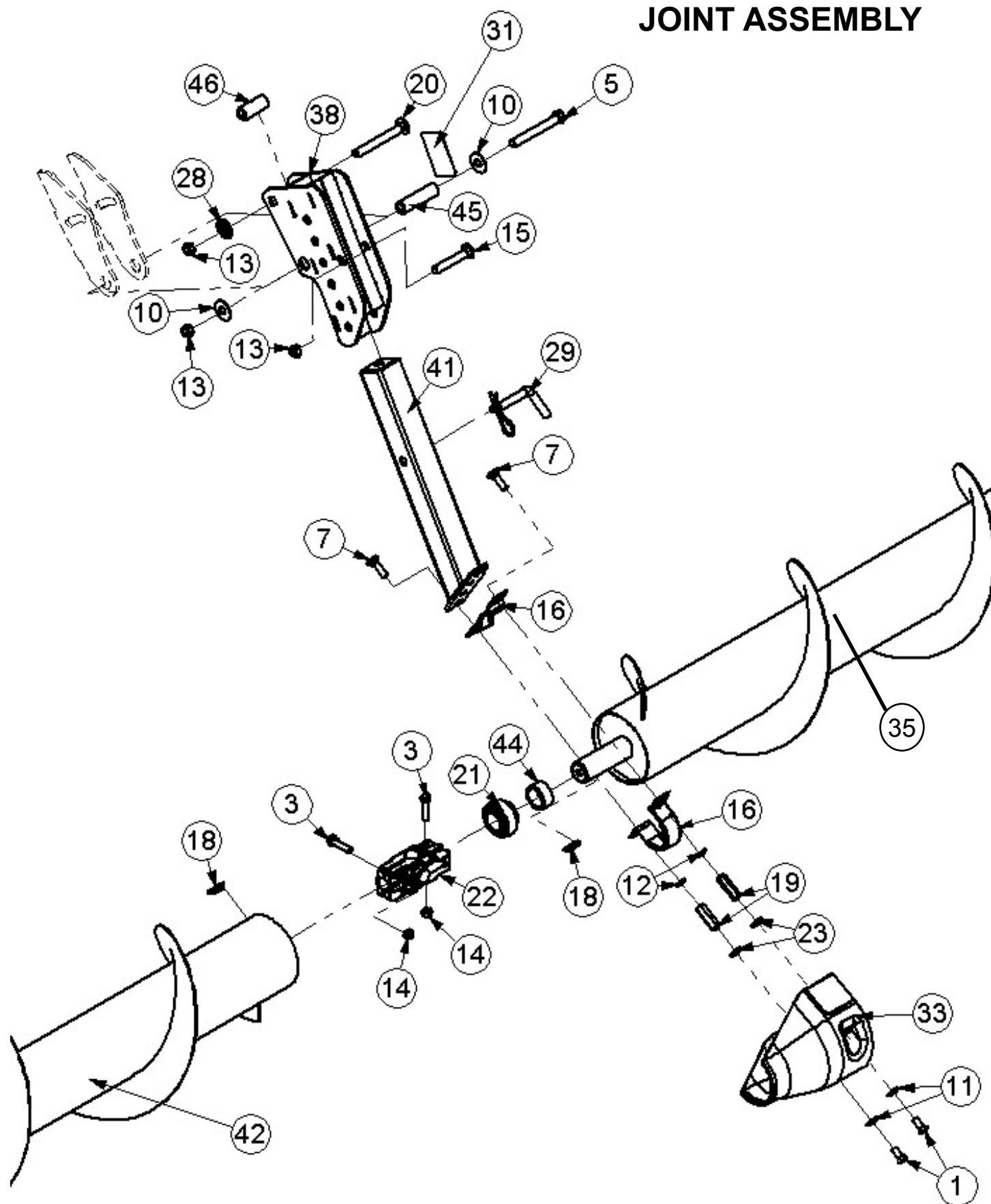
TOOLS REQUIRED

- 13/64" HSS Drill Bit
- Electric Drill
- Drill Driver
- 10mm Socket
- 3/8 Ratchet
- 1/2" Socket
- 3/4" Socket
- 1/2" Ratchet
- 1/2" Combination Wrench
- 3/4" Combination Wrench
- 15/16" Combination Wrench
- 1 1/16" Combination Wrench
- 1 1/8" Combination Wrench
- Non Marring Mallet
- Pieces of Plywood or other spacer material
- Petroleum Based Lubricant
- Wedge for spreading U-Joint
- File for cleaning Key Ways and Keys
- Anti-Sieze
- Zip Ties

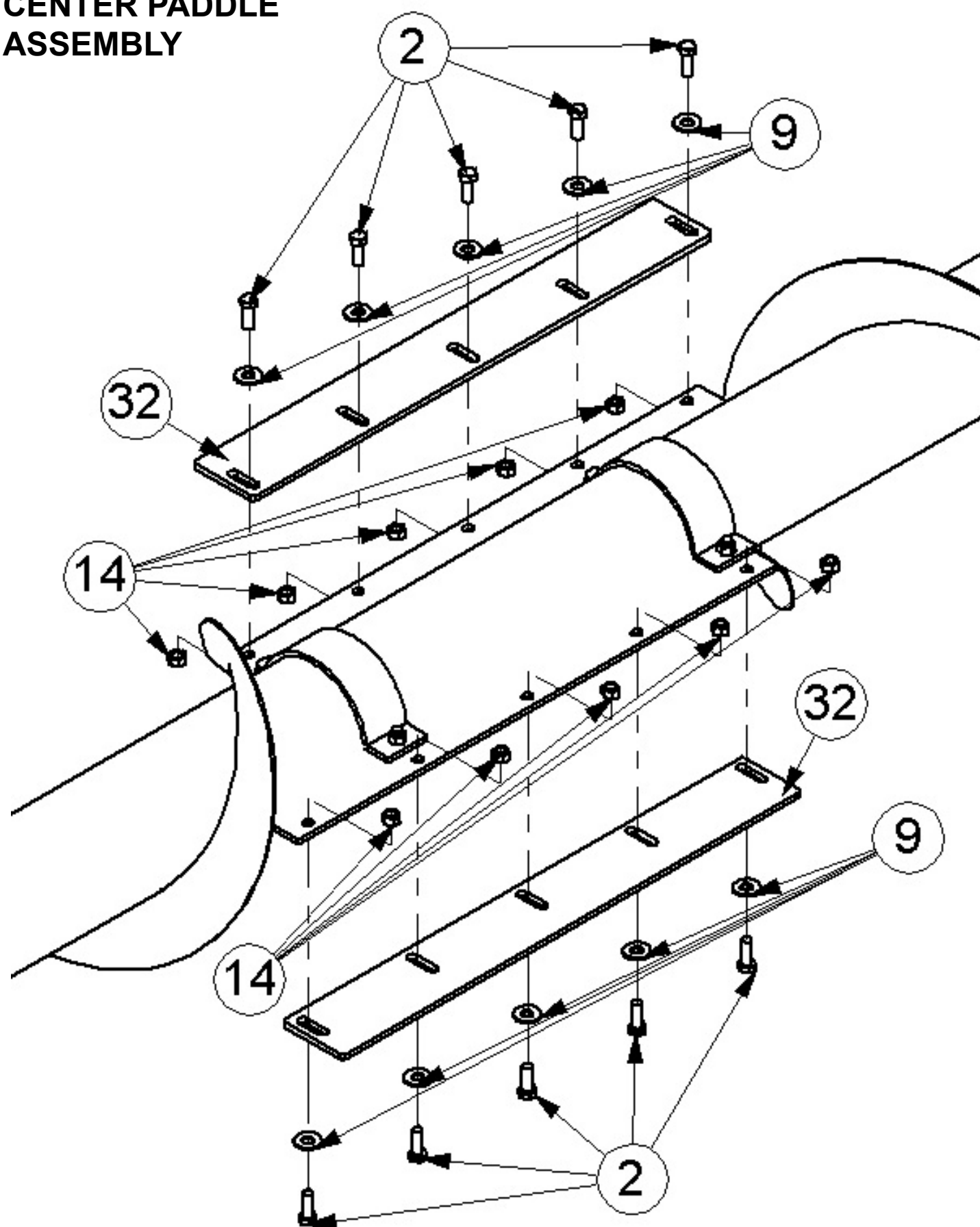
COMPLETE CROSS AUGER KIT SHOWN WITH UPPER TUBE LUGS



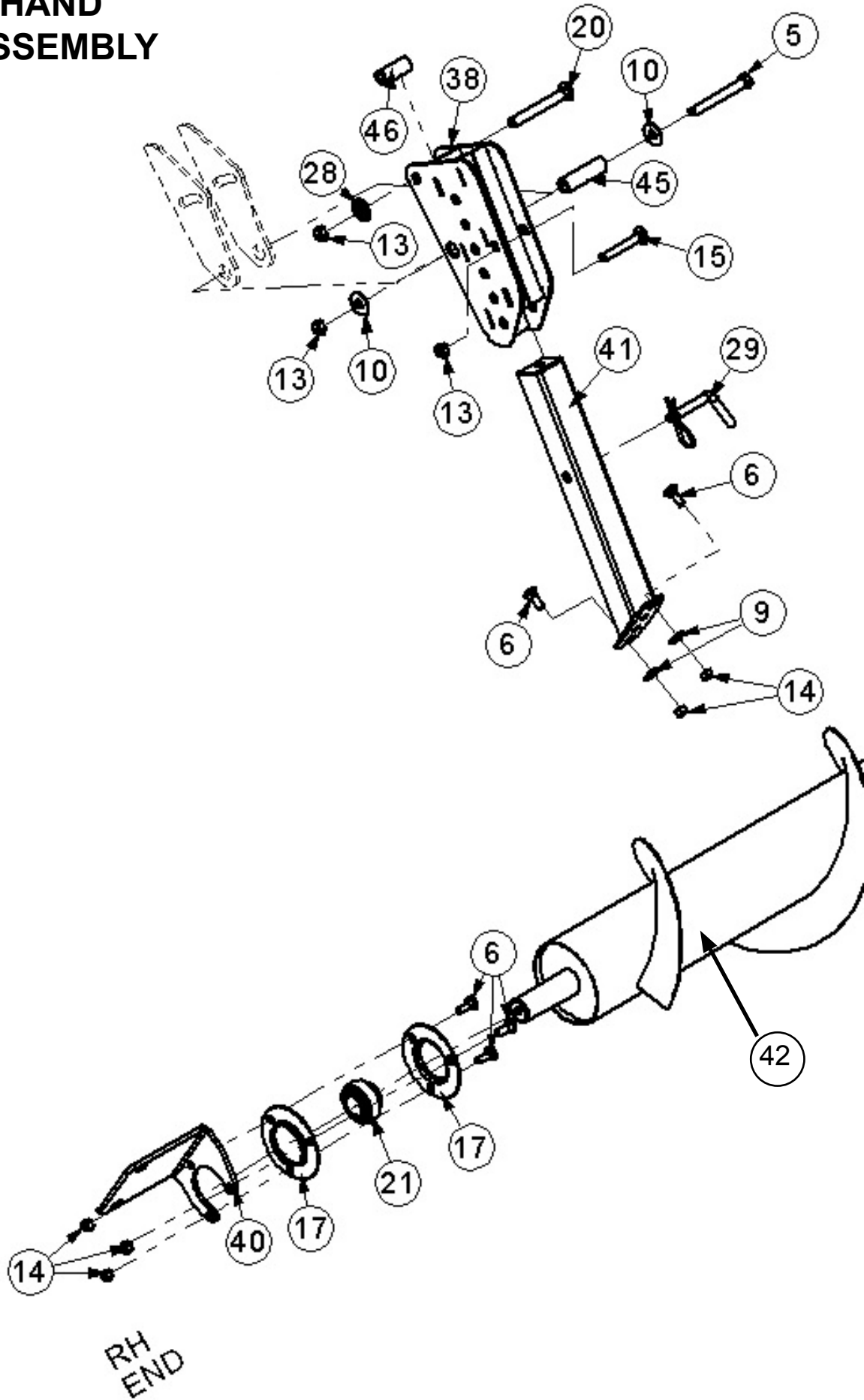
CROSS AUGER JOINT ASSEMBLY



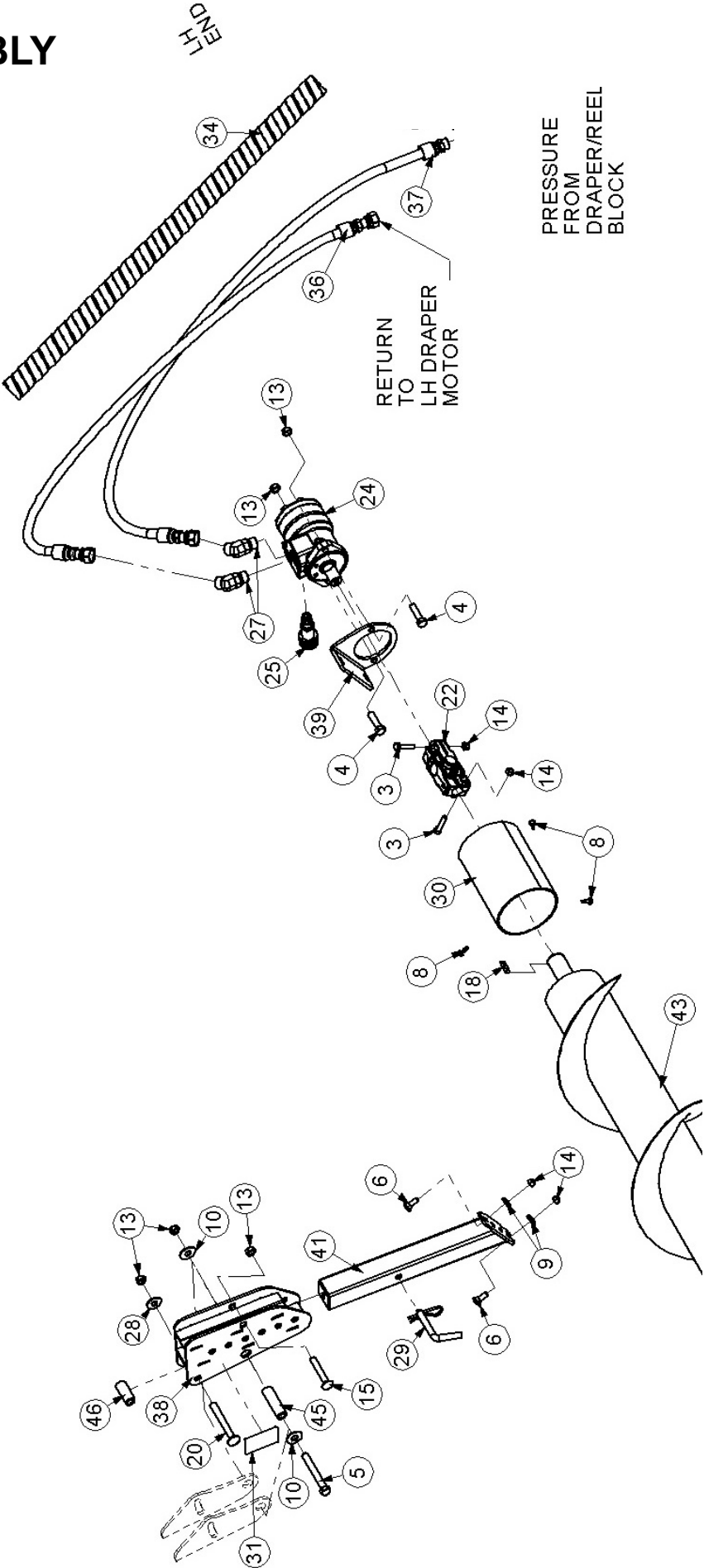
CENTER PADDLE ASSEMBLY



**RIGHT HAND
END ASSEMBLY**

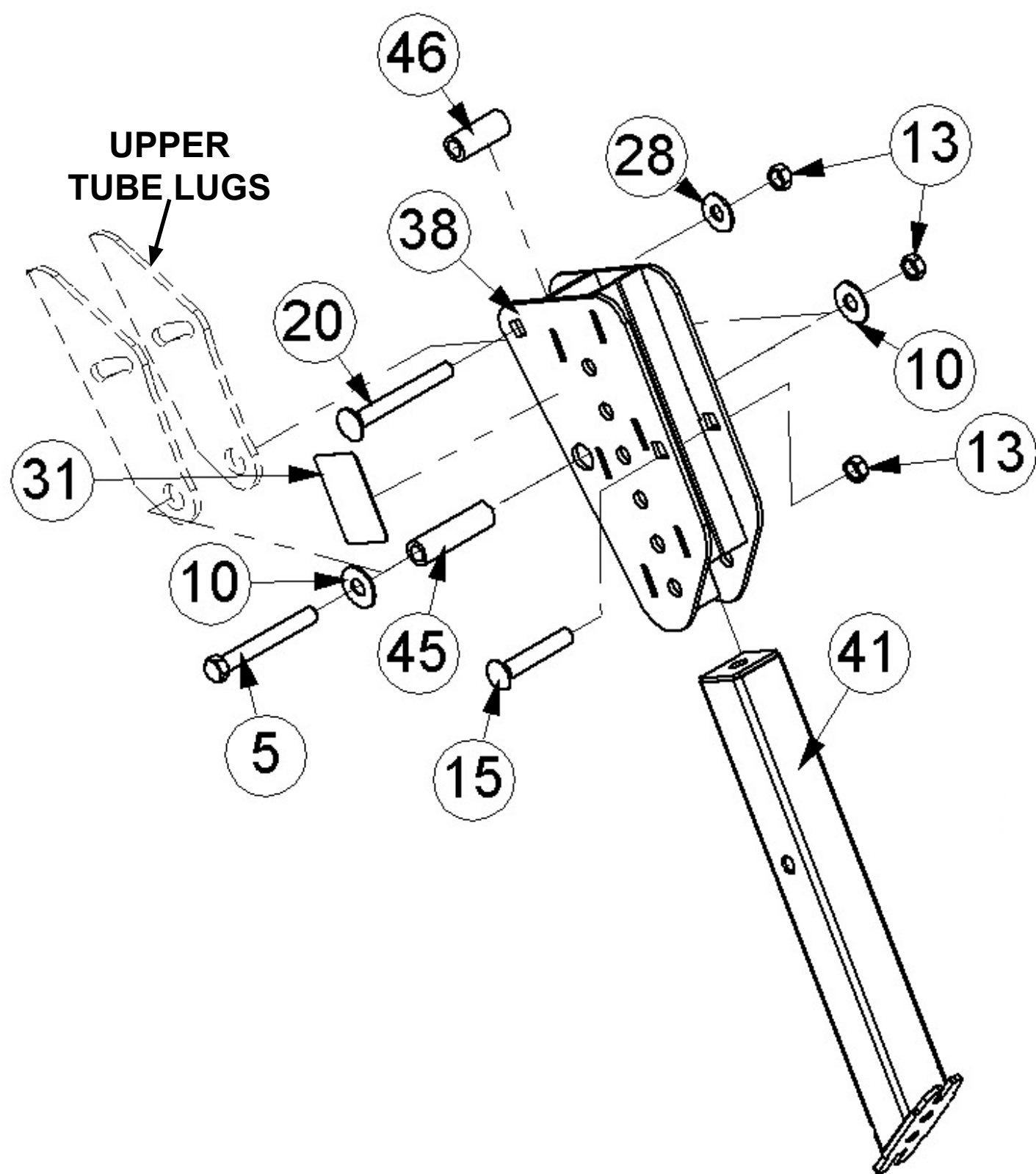


LEFT HAND END ASSEMBLY



Step 1

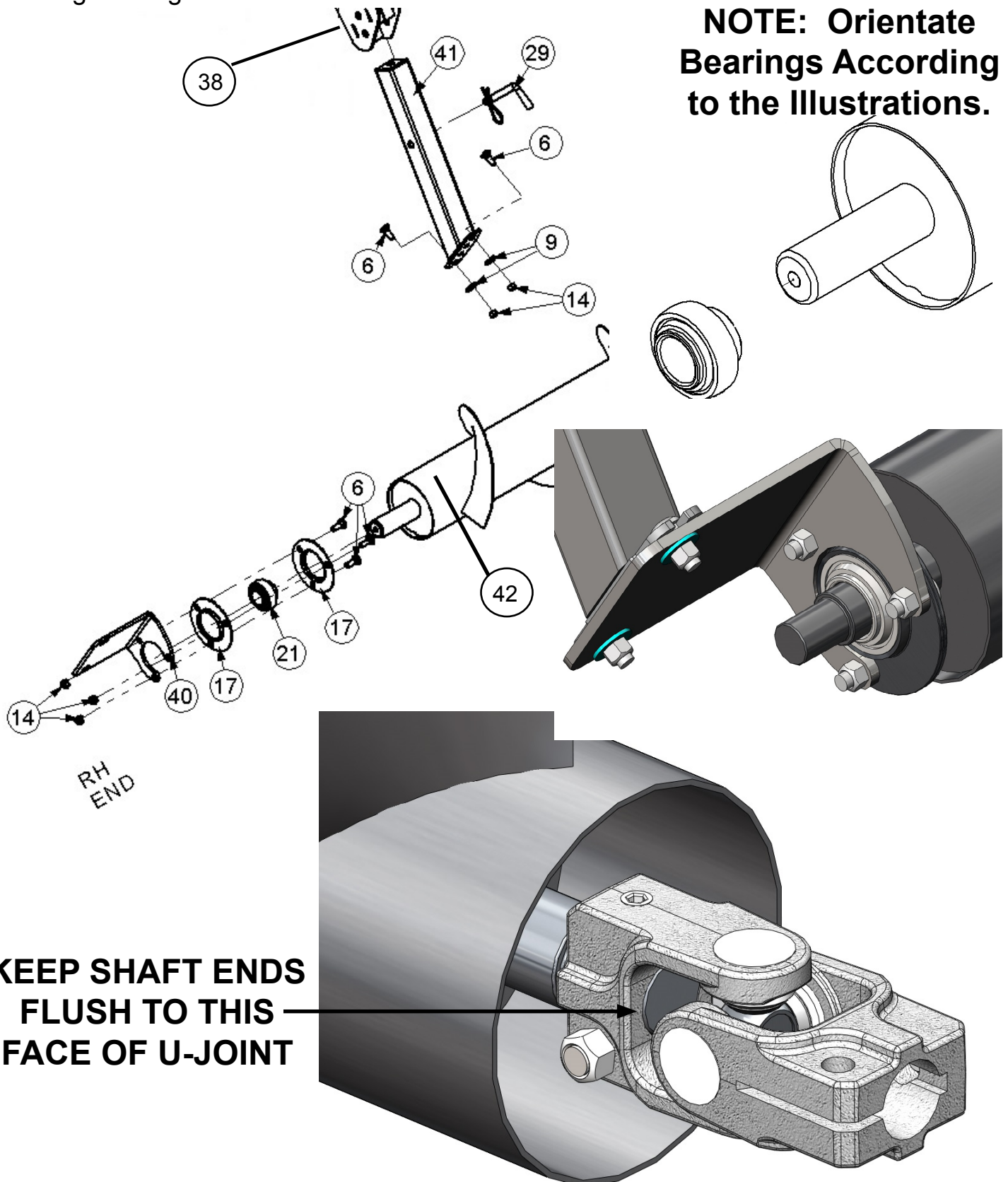
Gather parts and assemble the **Adjuster Brackets (38)** attaching them to the Upper Tube Lugs. Leave fasteners loose to make it easier to install the **Cross Auger Slide Tube (41)** later.



Step 2

Gather parts, numbered below, and assemble on the **Right Hand Cross Auger Weldment (42)** preparing it to be attached to the **Right Hand Adjustment Bracket (38)** and **Center Cross Auger**. Use a good **Anti-Sieze Compound** on all connections involving the auger shafts.

NOTE: Orientate Bearings According to the Illustrations.



Step 3

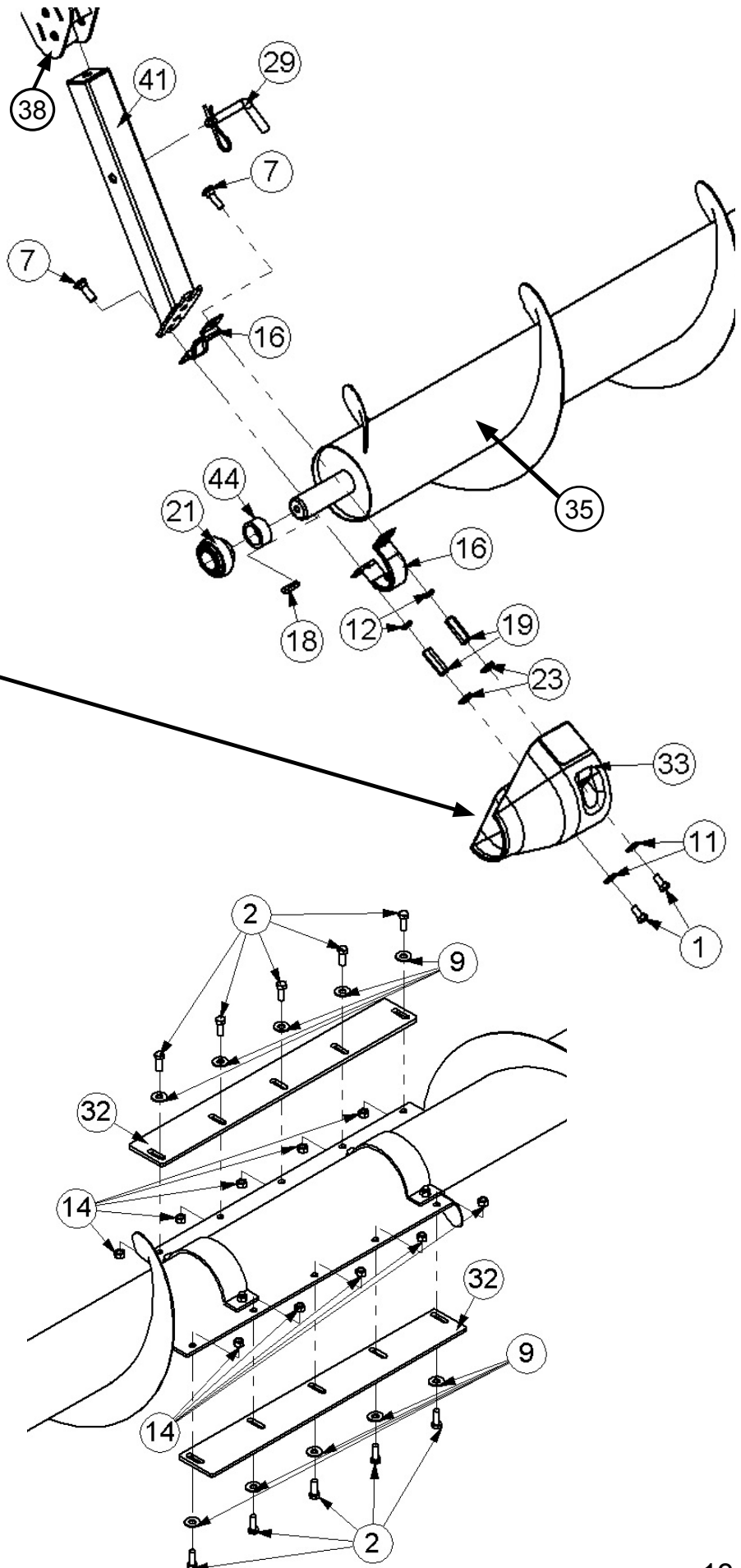
Gather parts, numbered in the illustration, and assemble on the **Center Cross Auger (35)** preparing it to be attached to the **Right Hand Cross Auger Assembly, Left Hand Cross Auger Assembly**, and the **Inner Adjustment Brackets (38)**. Do not forget the **Anti-Sieze**.

Leave the **Cross Auger Plastic Shield (33)** till after Final Adjustments are made.

Left End of Center Cross Auger is the same as the Right End.

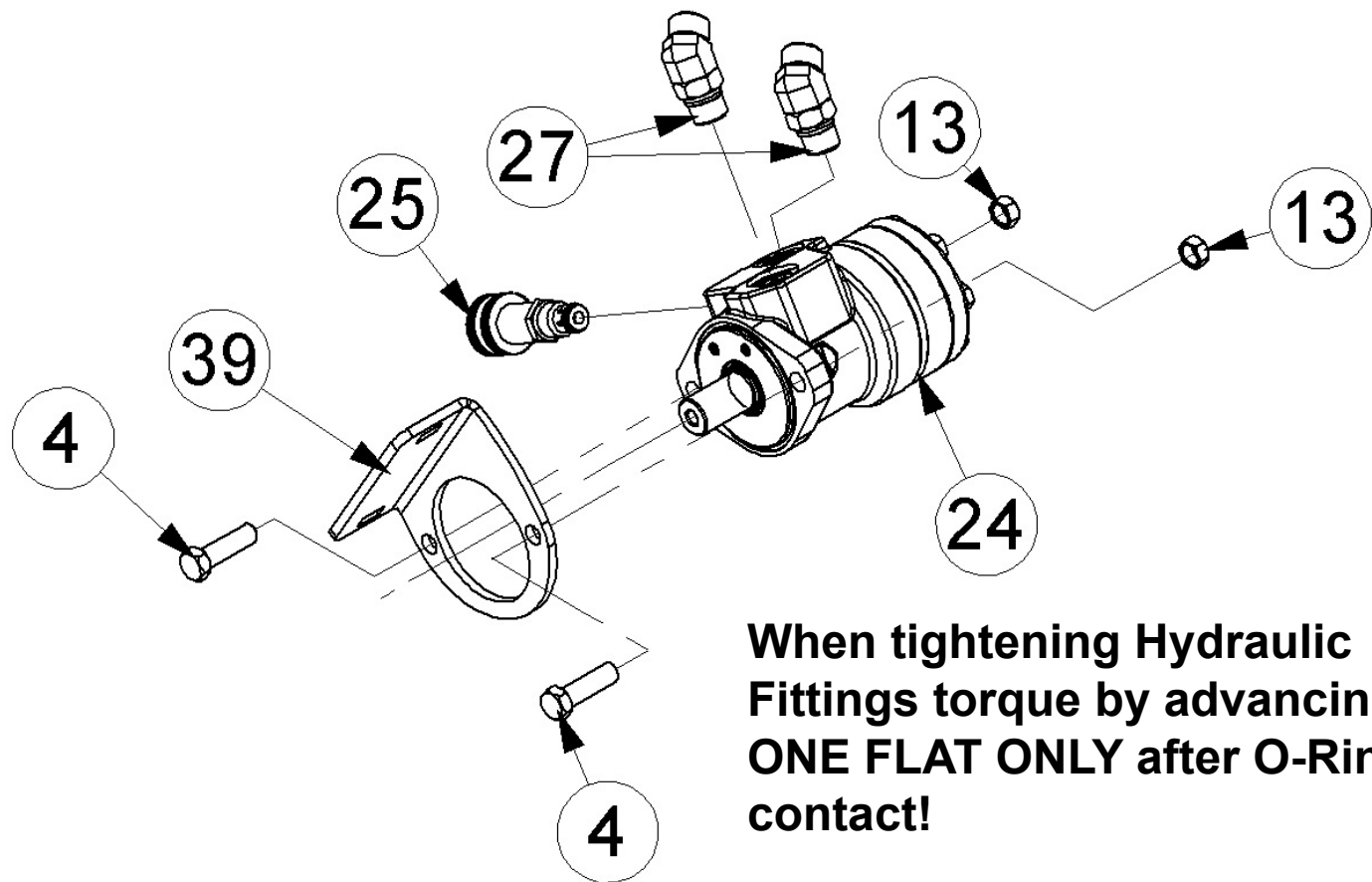
Step 4

Gather parts, numbered in the illustration, and assemble on the **Center Cross Auger (35) Paddle Assembly** with the **Center Cross Auger Paddle UHMW (32)**.



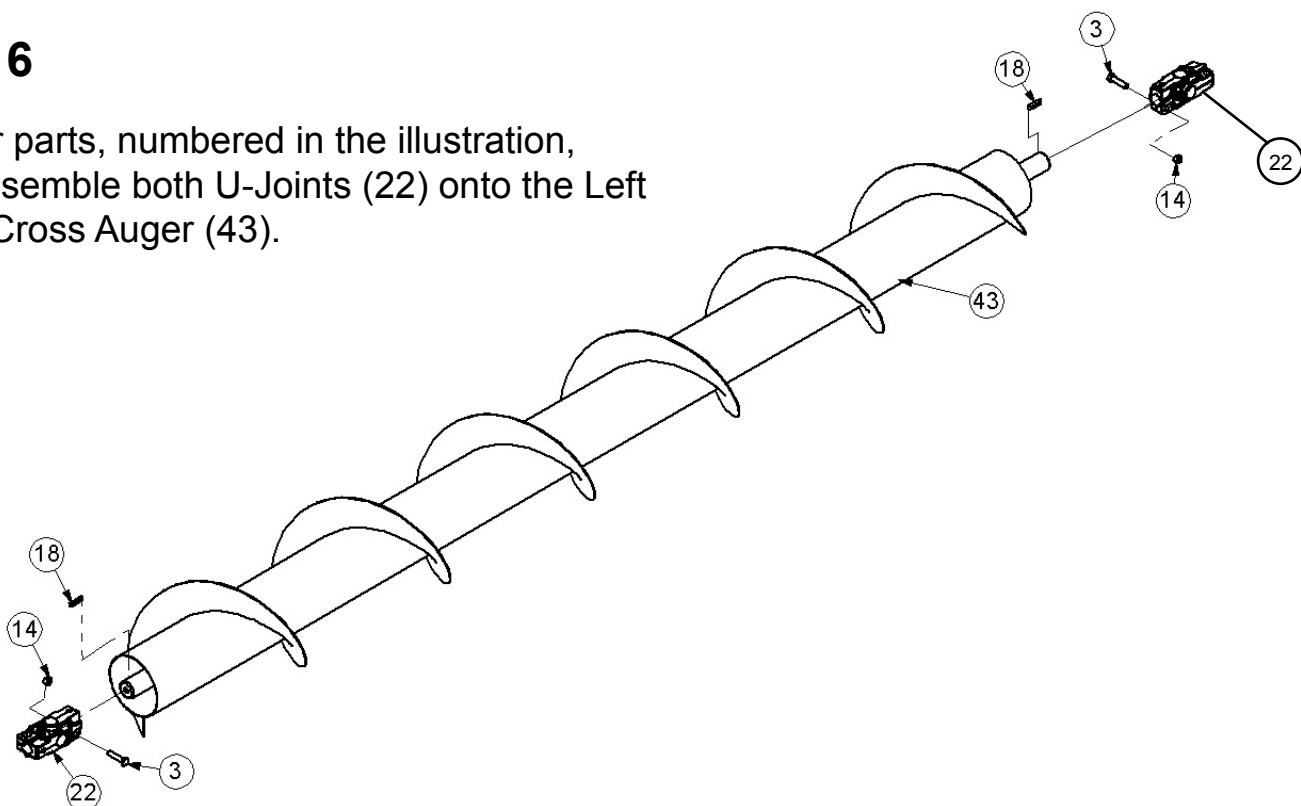
Step 5

Gather parts, numbered below, and assemble on the **Hydraulic Motor (24)**, **Hydraulic fittings (27)**, **Needle Valve (25)**, and **Cross Auger Motor Plate (39)**.



Step 6

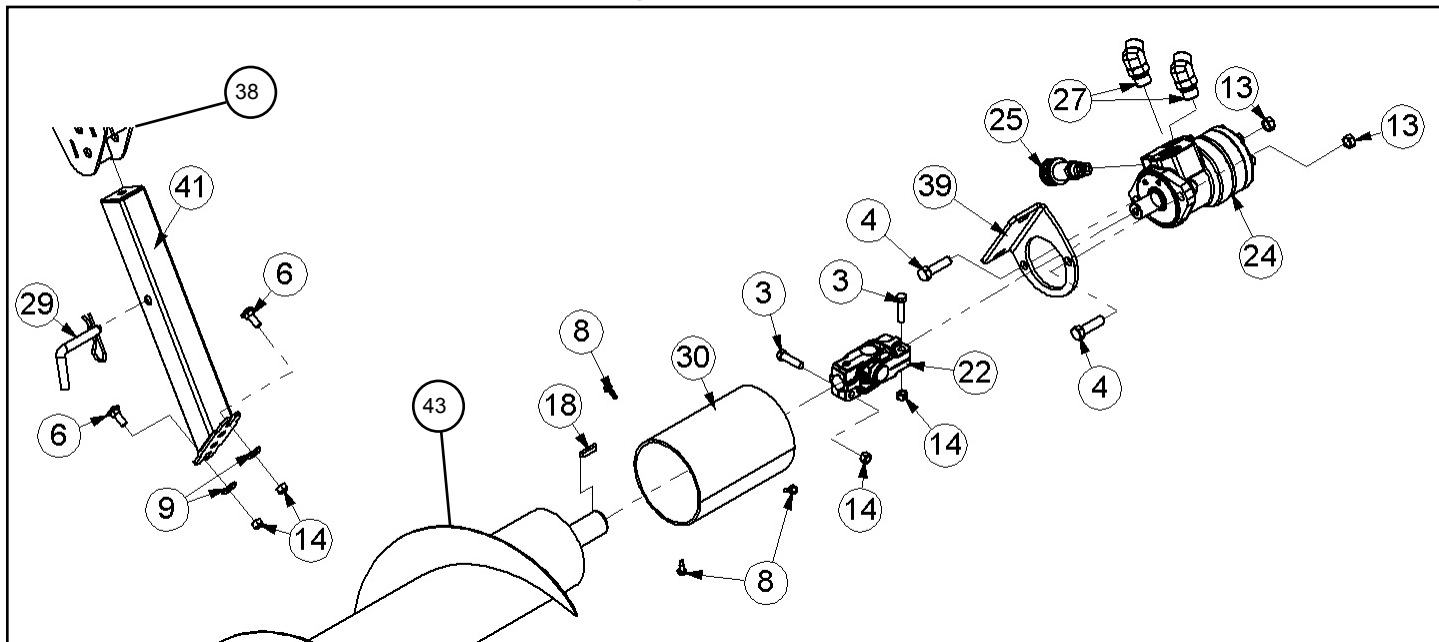
Gather parts, numbered in the illustration, and assemble both U-Joints (22) onto the Left Hand Cross Auger (43).



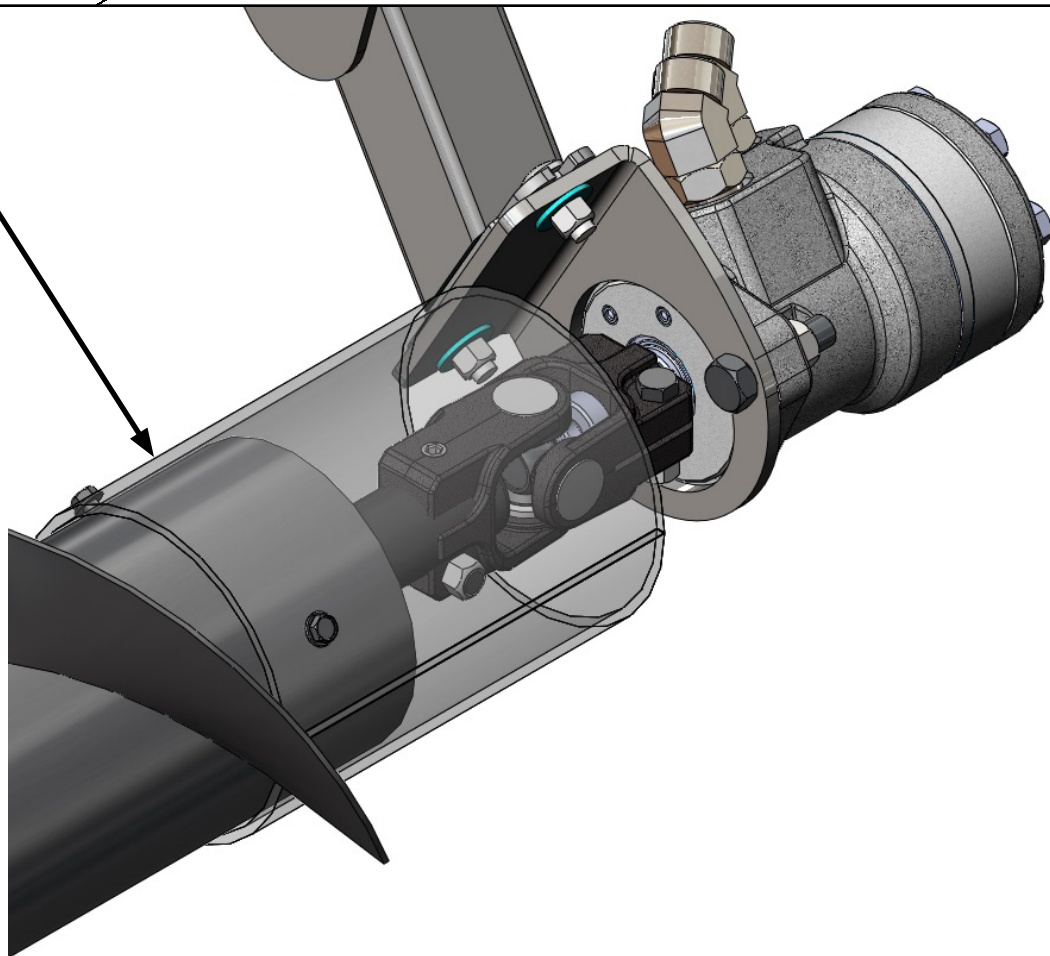
Step 7

Gather parts, numbered below, and assemble on the **Left hand Cross Auger Weldment (43)** preparing it to be attached to the **Left Hand Adjustment Bracket (38)** and **Center Cross Auger**.

Make sure to use **Anti-Sieze** on the **Hydraulic Motor (24)** shaft.

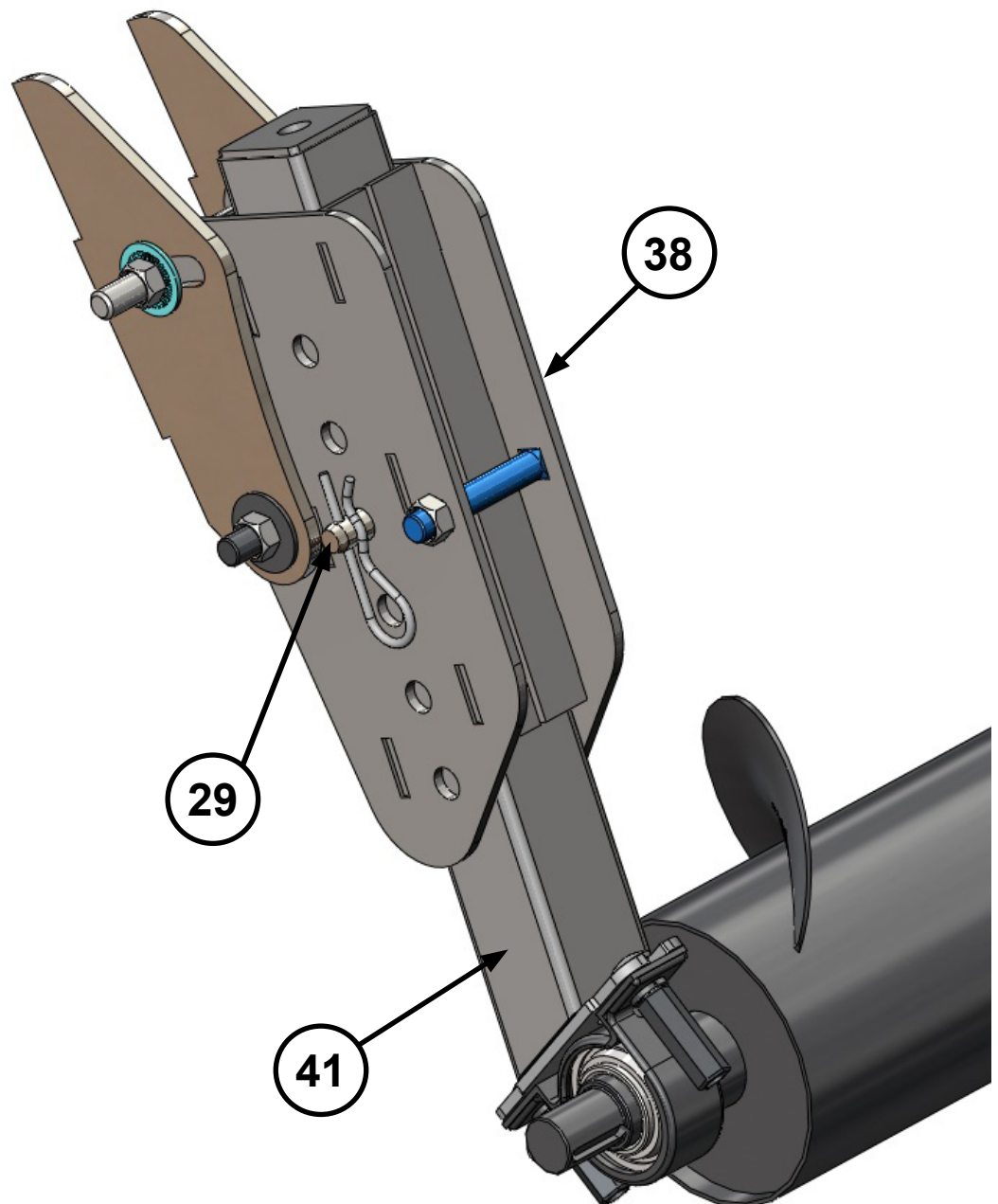
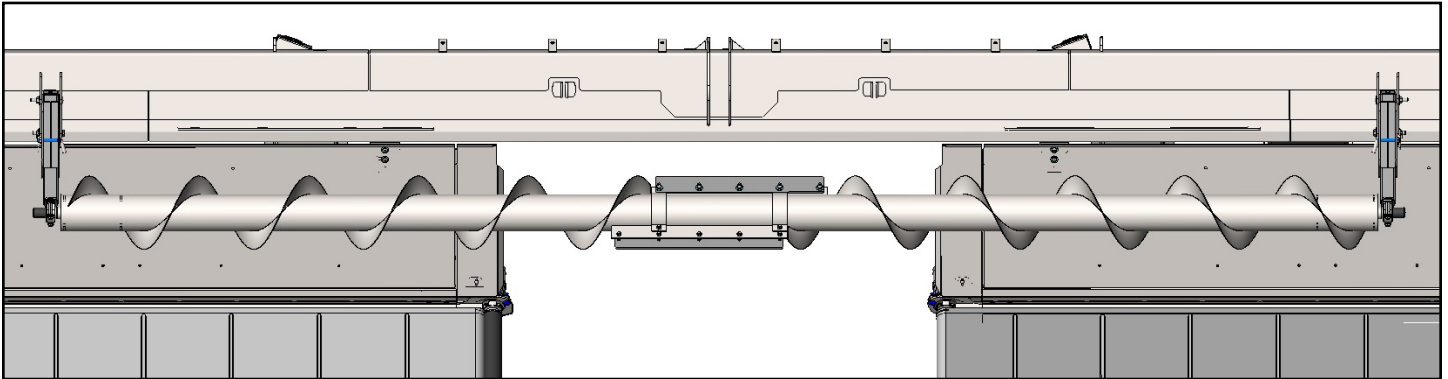


Place the **Plastic Shield (30)** up to the **Left Hand Cross Auger (43)** flanging. Pre drill three holes, then install the self tapping **Tek Screws (8)**.



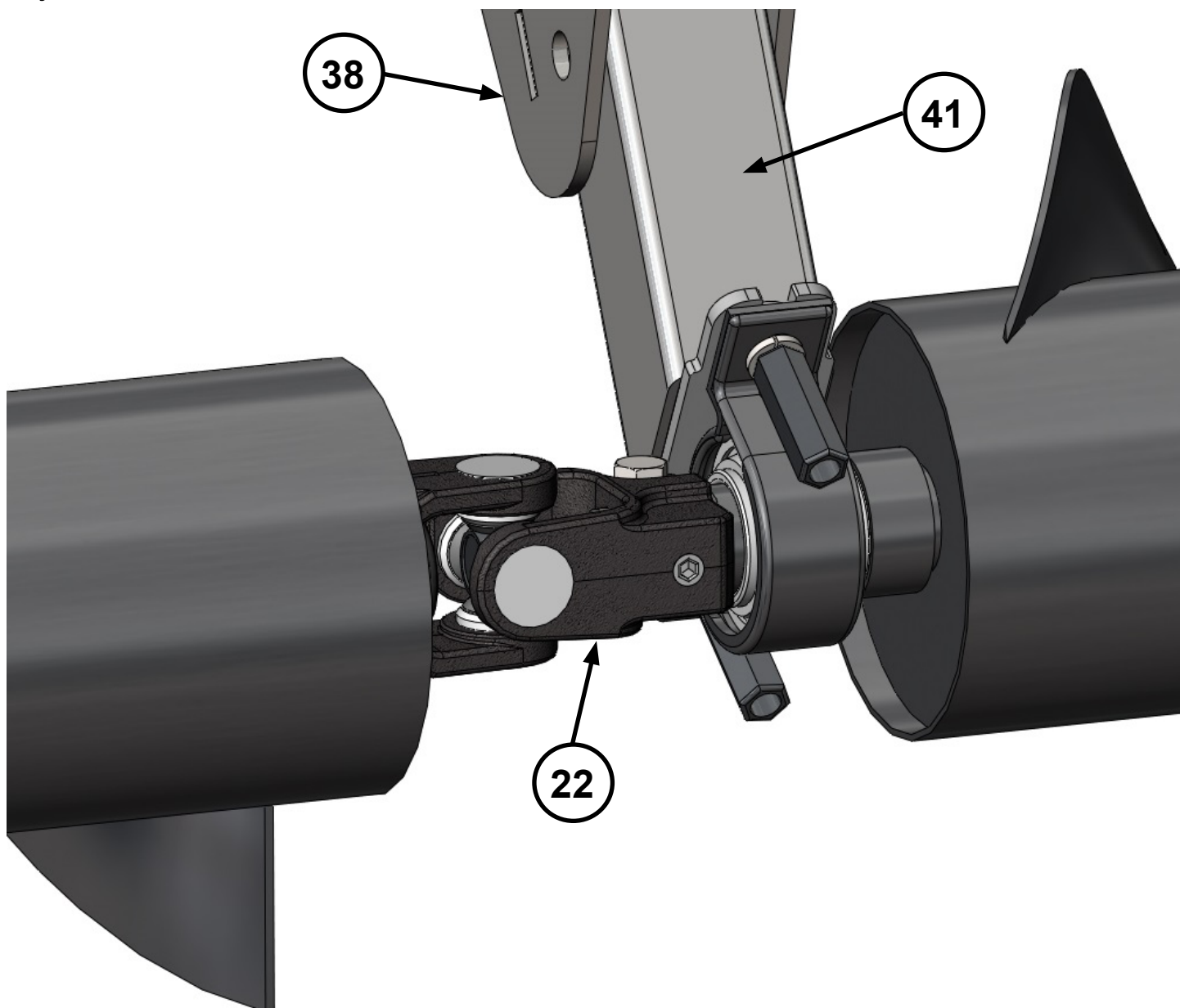
Step 8

Install **Center Cross Auger Assembly** by sliding the **Left and Right Slide Tubes (41)** into the **Adjustment Brackets (38)**. Place **Lock Pin (29)** on each side into the hole shown below. Leave all fasteners loose for final adjustments.



Step 9

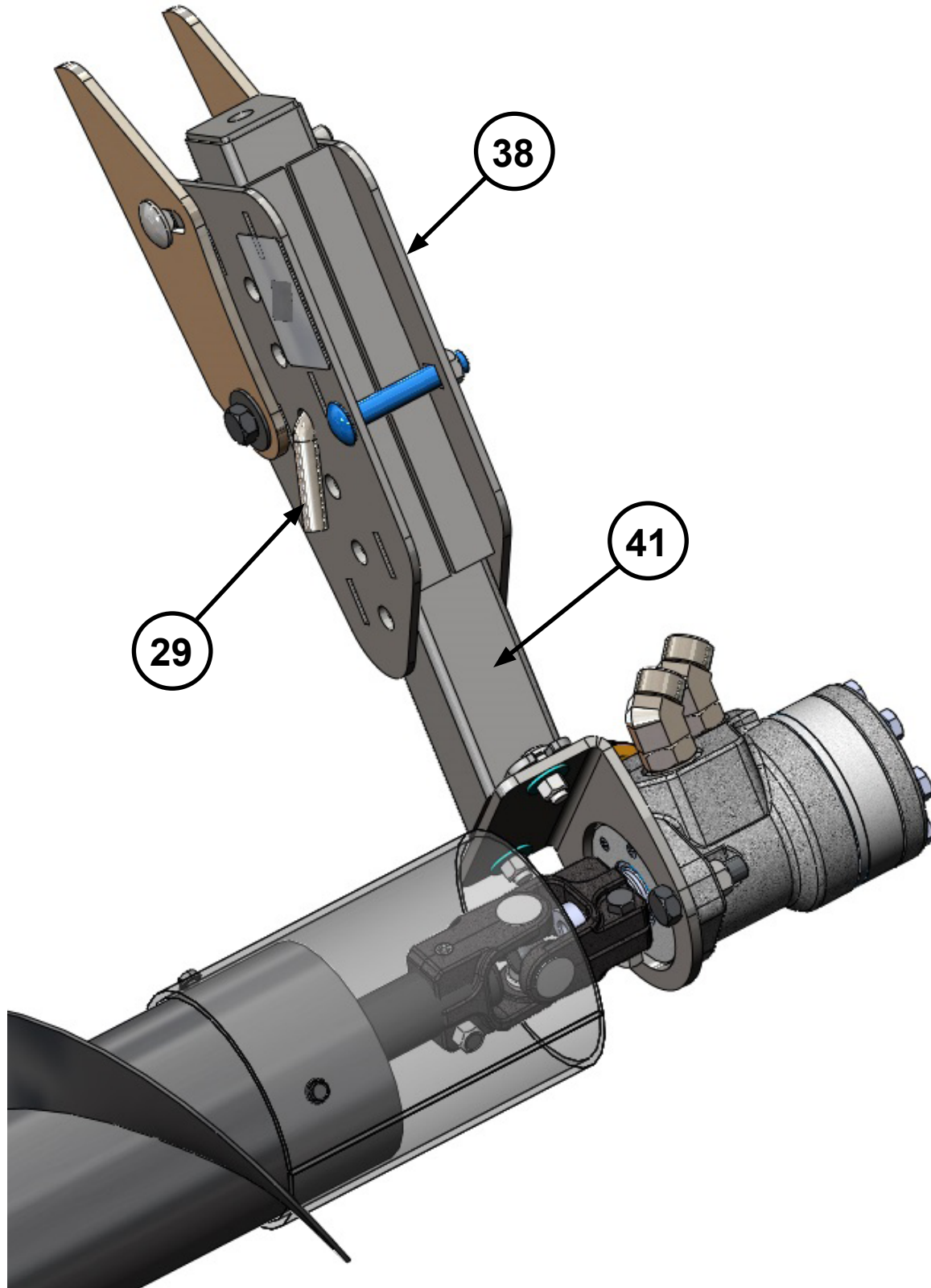
Install **Right Hand Cross Auger Assembly** by sliding **U-Joint (22)**, on left end, onto the **Right Hand Shaft of the Center Cross Auger Assembly**. Then slide the **Slide Tube (41)**, on the right end, into the **Adjustment Bracket (38)**. Place **Lock Pin (29)** into the hole shown on the previous page. Leave all fasteners loose for final adjustments.



Do Not Forget to use Anti-Sieze on shafts!

Step 10

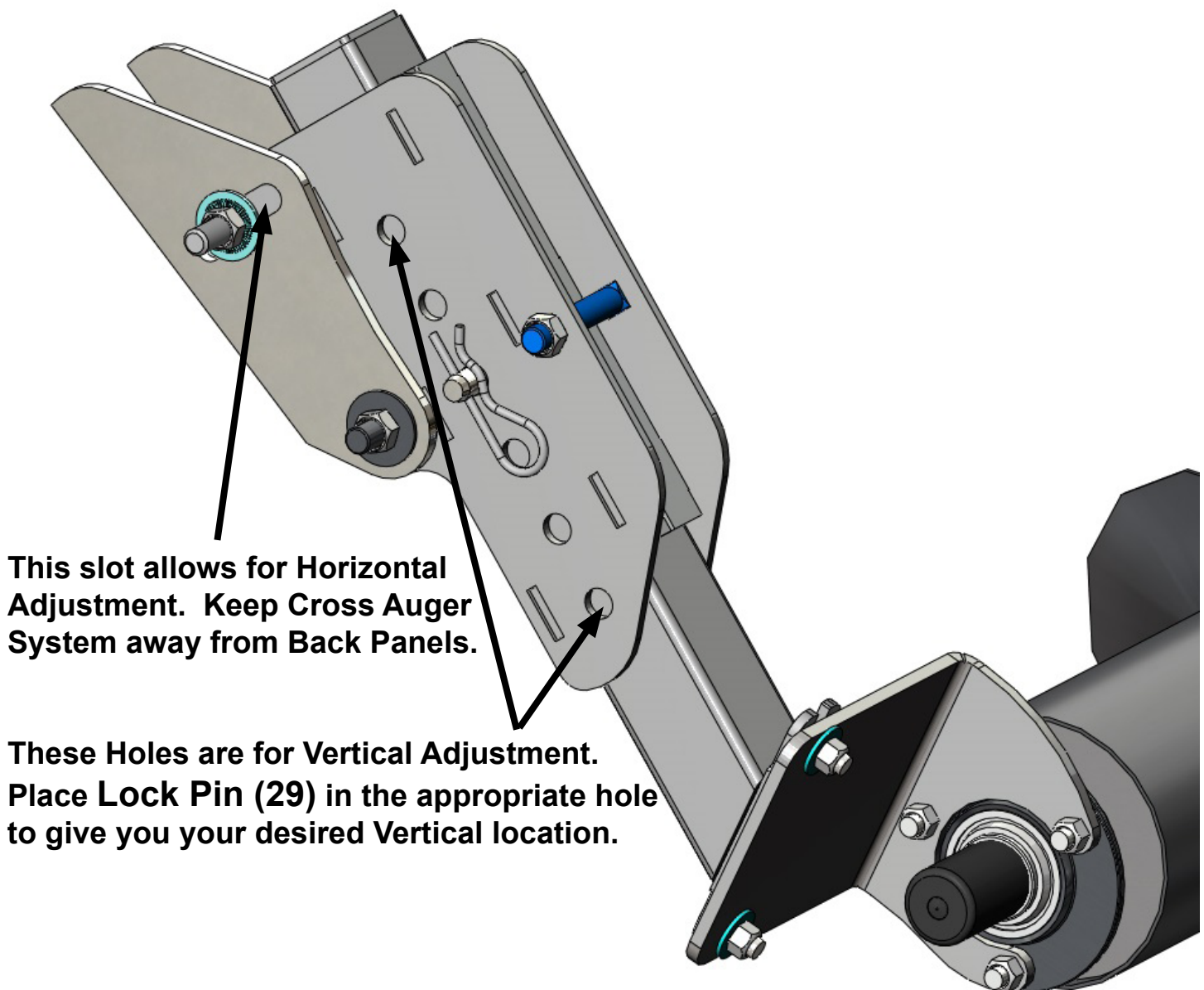
Install **Left Hand Cross Auger Assembly** by sliding **U-Joint (22)**, on right end, onto the **Left Hand Shaft of the Center Cross Auger Assembly** (See Page 17 Illustration). Then slide the **Slide Tube (41)**, on the left end, into the **Adjustment Bracket (38)**. Place **Lock Pin (29)** into the hole shown on Page 16.



Step 11

Make sure that you have your spacers placed between the Back Panels and the Auger Sections.

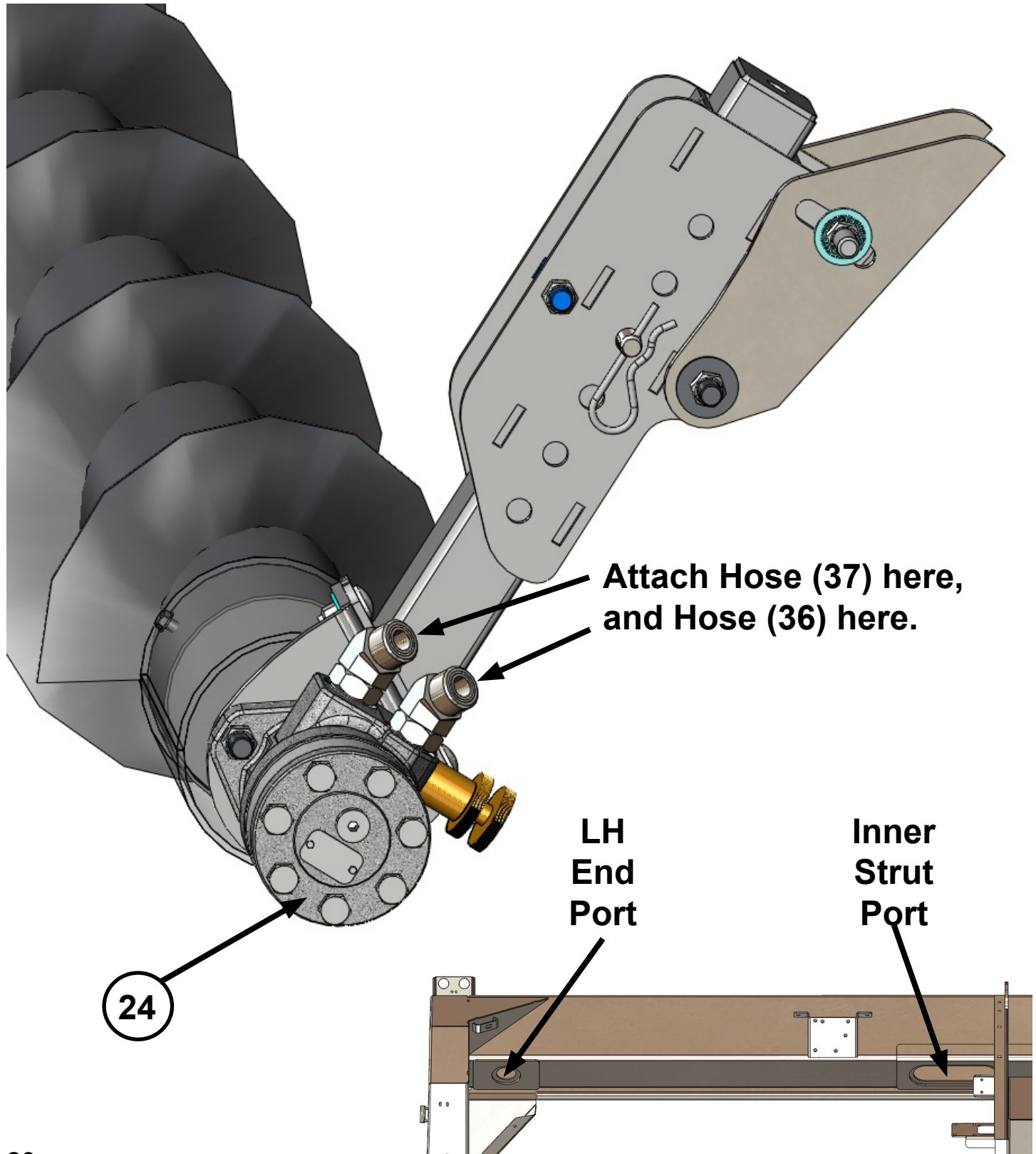
Tighten all fasteners to secure Cross Auger System in place.



Step 12

Attach both **Hydraulic hoses (36 & 37)** to the **Hydraulic Motor (24)**. Use the **Petroleum Lubricant** on the Face Seal O-Rings.

Route hoses into Upper Tube at **LH End Port** and out at the first **Inner Strut Port**.



Step 13-Hydraulic Line Connection

Attach **Hose (37)** to **Pressure Line** for the Left Hand Draper Motor.

Attach **Hose (36)** to the Left Hand Draper Motor Pressure Port.

Remember to use Lubricant on O-Rings.

Final Step

Open the Needle Valve slightly, start the Power Unit and test the assembly.

The Cross Auger can be turned off by fully opening the Needle Valve in the Cross Auger Motor.

