



WSC GRAIN BELT SWATHER



MAXIMIZE MACHINERY EFFICIENCY

Honey Bee lives to make harvests faster and more efficient. Available exclusively for New Holland Speedrower® PLUS and Case IH WD5 series windrowers, the WSC Grain Belt Swather table turns your power unit into a high-efficiency swather, increasing your farming productivity.

Built on a platform that easily attaches to a New Holland or Case IH windrower, and with increased durability features such as a heavy-duty 3/16" (4.8 mm) tubular steel header mainframe, the WSC Grain Belt Swather is designed to last. Available in 30' and 36' widths, its high capacity is optimal for improved flow of specialty crops like canola. A simple coupling and uncoupling procedure makes the header easy to transport down narrow roads.

SCH CUTTING SYSTEM

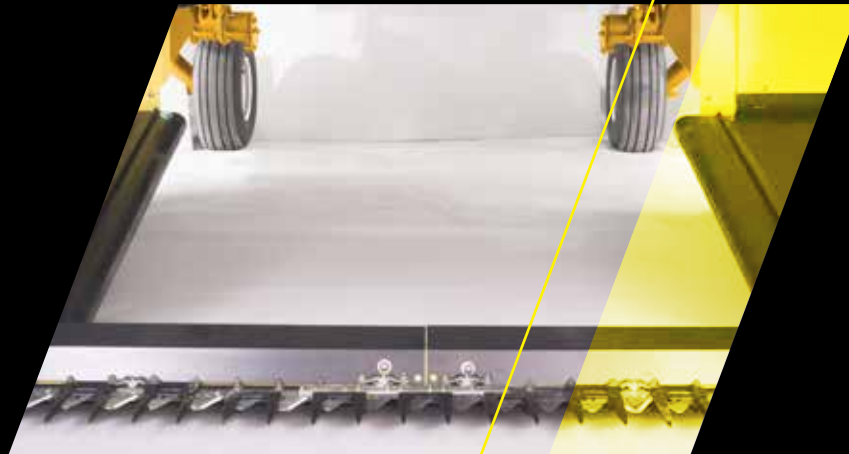
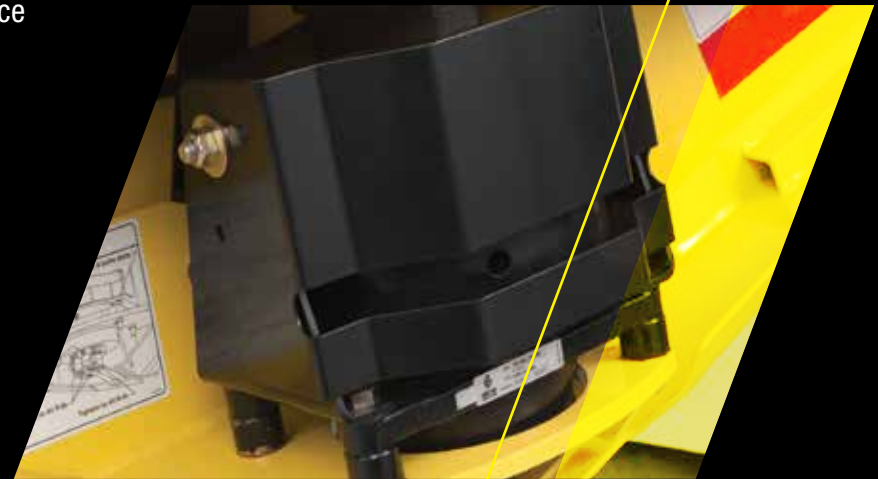
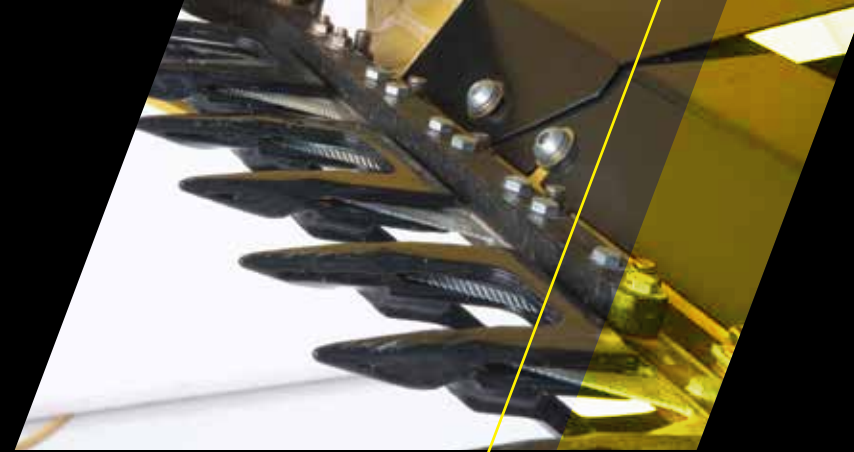
The SCH Easy Cut system provides smooth, superior cutting. Spring steel guards with cutting edges on top and bottom, along with alternating, bolted, heat-treated sections, eliminate the need for hold downs. The system keeps dirt and debris from accumulating under the knives for increased performance in severe cutting conditions.

KNIFE DRIVE

The knife is driven by a 3 5/16" (8.4 cm) stroke, epicyclic knife drive that operates at 1,400 strokes per minute. The knife drive is powered by a low maintenance hydraulic drive motor. Double knife drive systems are standard equipment on all sizes.

SWATH OPENING

Standard swath opening is 77.5" - 84" (197 cm - 213 cm). Double swath opening is 56" (142 cm). Standard and double swath options are available on all sizes.





REMOTE DRAPER SPEED CONTROL

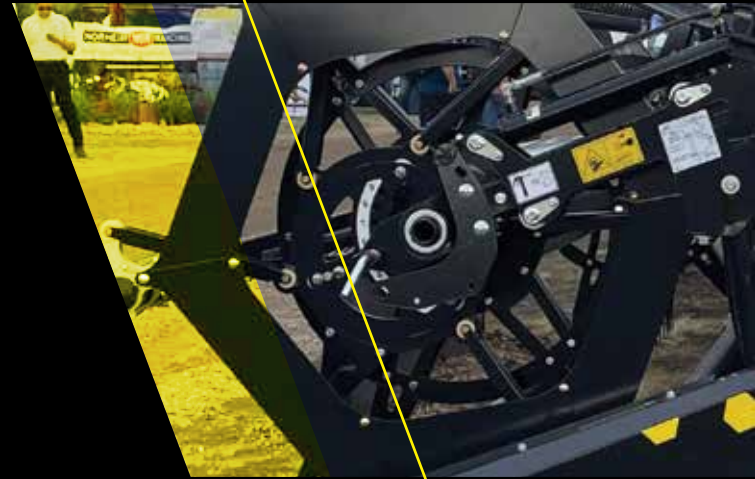
Draper speeds are hydraulically controlled in-cab and are adjustable up to 750 fpm (229 mpm). Remote speed control gives you the power to quickly adjust draper speeds for varying crop conditions.

HIGH PERFORMANCE HONEY BEE REEL

The custom built, fully adjustable reel is hydraulically driven by the windrower. All reel functions are controlled through the tractor's hydraulic control valves for quick in-cab adjustment in changing crop conditions.

POLYESTER DRAPERS

42" (107 cm) drapers are made of long-lasting, rubberized polyester with fiberglass-reinforced slats and are V-guided to eliminate manual draper tracking.



DRAPER DRIVE

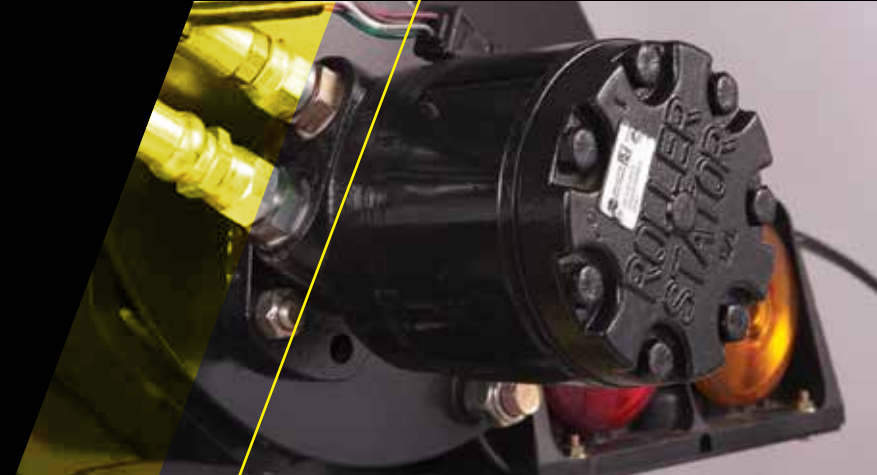
The 3" (7.6 cm) diameter drive rollers provide traction in heavy crop conditions. Powered from the outside by a hydraulic motor, the drapers move the crop towards the center for more uniform feeding.

REEL DRIVE

The hydraulically-driven reel is easily controlled using standard in-cab controls. In-cab controls allow for quick reel adjustment in changing crop conditions.

HYDRAULIC HEADER TILT

No-wrench header tilt adjustment for header tilt control in varying crop conditions.



FORE AND AFT REEL ADJUSTMENT

A hydraulic adjustment with in-cab control is available for fore/aft positioning for on-the-go response to changing crop conditions.

DRAPER TENSION AND TRACKING

The canvas can be adjusted for tracking and tightening, for even tension on both the front and rear of the rollers. A quick release lever allows easy canvas and roller cleaning.

INTEGRAL STORAGE TRANSPORT

The self-contained transport, including hitch, jack and axle, is conveniently stored on the swather table.





CASE IH

8250

Honey Bee
Harvest Master

END STRUT GAUGE WHEELS

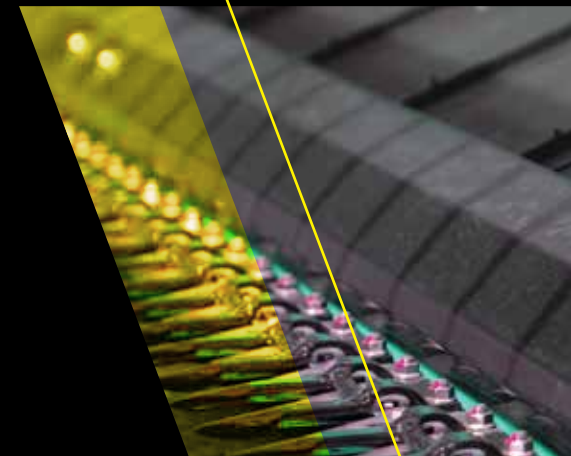
These smaller wheels mount on the ends of the table and help prevent them from digging in the dirt when operating in rolling terrain or going through drainage ditches.

CASTORING GAUGE WHEELS

Vertically adjustable with a screw jack and cushioned with a rubber spring for compression and rebound, the castoring design eliminates gouging when turning. Available as standard equipment on all sizes.

HAY GUARD

The hay guard ensures a smooth transition from knife to draper and reduces material wrapping on the rollers.



SKID PLATES

UHMW skid plates are standard on all models to protect the cutterbar when cutting crops close to the ground.

DOUBLE SWATH

Using two shifting decks, double swath gives you in-cab control for right, left and center delivery of your windrow. The double swath option is available on all sizes.



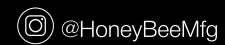
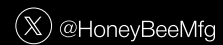
SPEC SHEET WSC GRAIN BELT SWATHER

Specifications	WSC15	WSC25	WSC30	WSC36
Width	15' (4.6 m)	25' (7.6 m)	30' (9.1 m)	36' (10.9 m)
Operating Weight	3,406 lbs (1,545 kg)	5,027 lbs (2,280 kg)	5,500 lbs (2,495 kg)	6,346 lbs (2,878 kg)
Hydraulic System	Supplied by Windrower			
Header Flotation	Supplied by Windrower			
Cutting System	SCH Easy Cut, spring steel guards, bolted sections			
Knife Drive	SCH Epicyclic 3 5/16" (8.4 cm) stroke, hydraulically driven, approximately 1,400 strokes per minute			
	Double			
Draper	42" (106.7 cm) wide rubberized polyester, fibreglass reinforced rubber slats Hydraulically driven, speed adjustable from approximately 0 - 750 fpm (228 mpm)			
Reel(s)	Solid Reel - 15' (4.6 m)	Solid Reel - 25' (7.6 m)	Solid Reel - 30' (9.1 m)	Solid Reel - 36' (10.9 m)
	Honey Bee Cam Reel - 6 bat, quick change plastic teeth, multiple spacing. Quick time adjustment			
Reel Drive	Standard - using Windrower Hydraulic System c/w one drive motor. Reel speed adjustable in cab			
Castoring Gauge Wheels	N/A	N/A	Standard	
End Strut Gauge Wheels	Optional			
Integral Storage Transport	Standard - transport components stay on machine when cutting			
Tires/Wheels/Hubs/Spindles	Standard			
Cutter Bar Poly Skid	Standard			
Hay Guard	Standard			
Double Swath (Optional)	N/A	Hydraulic Deck Shift		
Swath Opening	Single swath - 80" (203 cm) (56" [142 cm] when adding the 14" [36 cm] decks - optional), Double swath - 56" (142 cm)			
Windrower Adapters	Speedrower 220 PLUS, Speedrower 260 PLUS, WD 2105, WD 2505 (6 cylinder only)			
Cross Auger (Size Specific) (Optional)	N/A	WSC25 (3 pc)	WSC30 (3 pc)	WSC36 (3 pc)
Hydraulic Header Tilt	Standard			

Specifications are subject to change without notice or obligation.



honeybeemfg.com



© Honey Bee is a registered trademark of Honey Bee Manufacturing Ltd. Specifications subject to change.