



Honey Bee Manufacturing Ltd.
P.O. Box 120
Frontier, Sask. S0N 0W0
Phone (306) 296-2297
Fax (306) 296-2165
Email: alton.norheim@honeybee.ca

SERVICE BULLETIN

MANDATORY

FIX ON FAILURE

INFORMATION ONLY

Ref: SRV-020-002

Date: 1-23-20

Product: 200 Series AirFlex and SDX Headers

Re:

Problem: Crop Flow Kit

Solution: In some crop conditions the flow of the crop may hesitate at the front of the feeder deck. To help in those situations a kit is available to provide a smooth transition.

This kit is mounted to the front feeder deck support and extends to the front roller of the feeder deck. The kit Part Number G206829 consists of the following parts.

Item No.	Qty	Part Number	Description
1	10	19901	5/16" Nut
2	10	21642	5/16" X 3/4" Carriage bolt
3	2	205117	Crop Flow Slide
4	1	G205116	Crop Flow Mounting Plate

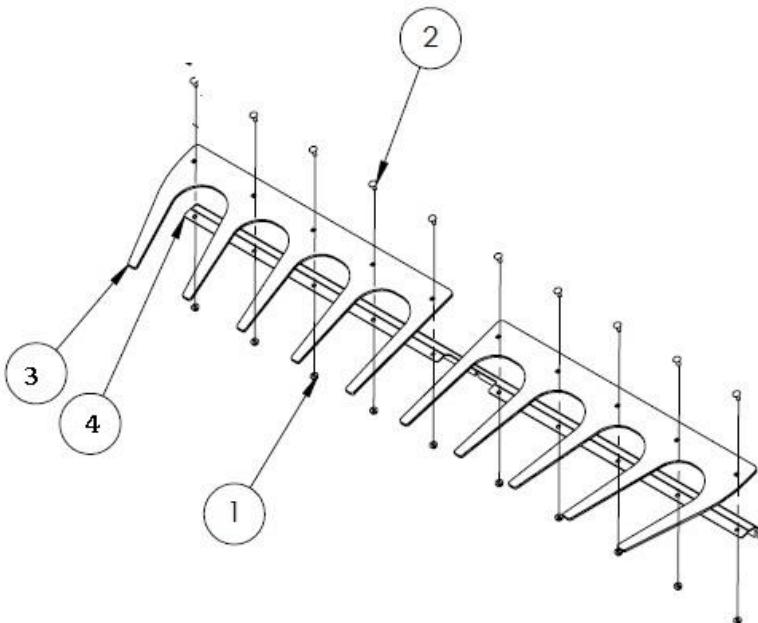


Figure 1

Installation Instructions

- Mount the Crop flow slides to the mounting plate using the ten 5/16" X 3/4" Carriage bolts. Install the nuts as shown in figure 1. Tighten the nuts to 13 ft. lbs. (17 Nm).
- Loosen the front mounting bolts on the feeder deck frame. Figure 2 **DO NOT REMOVE THE BOLTS**. The nuts can be accessed under the header behind the cutter bar. Figure 3

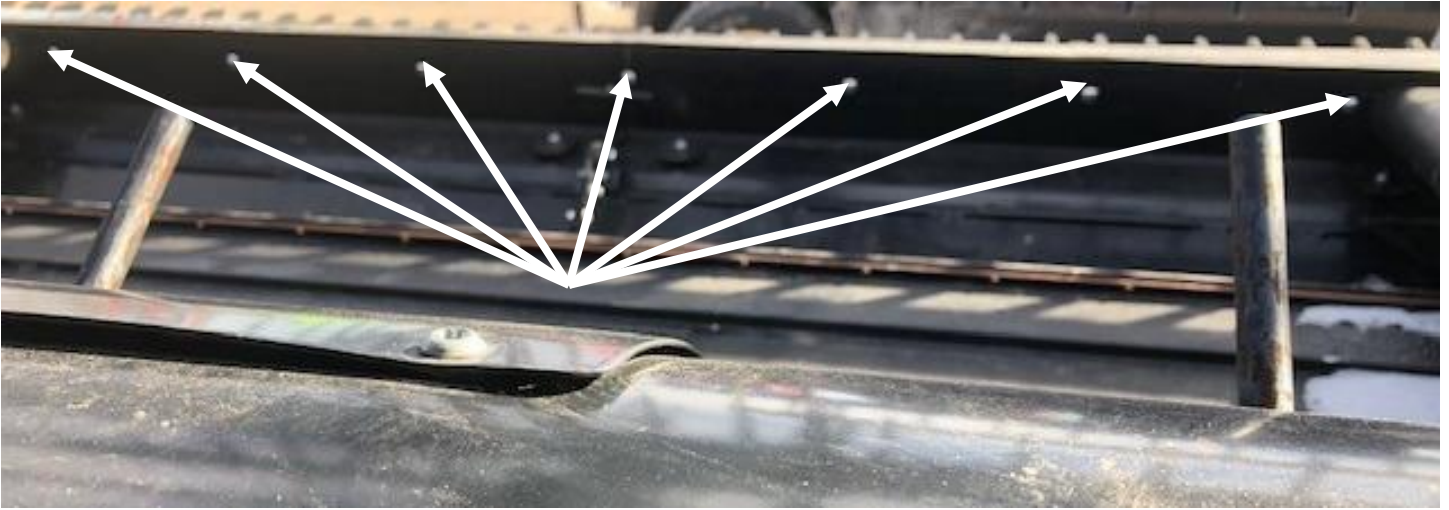


Figure 2

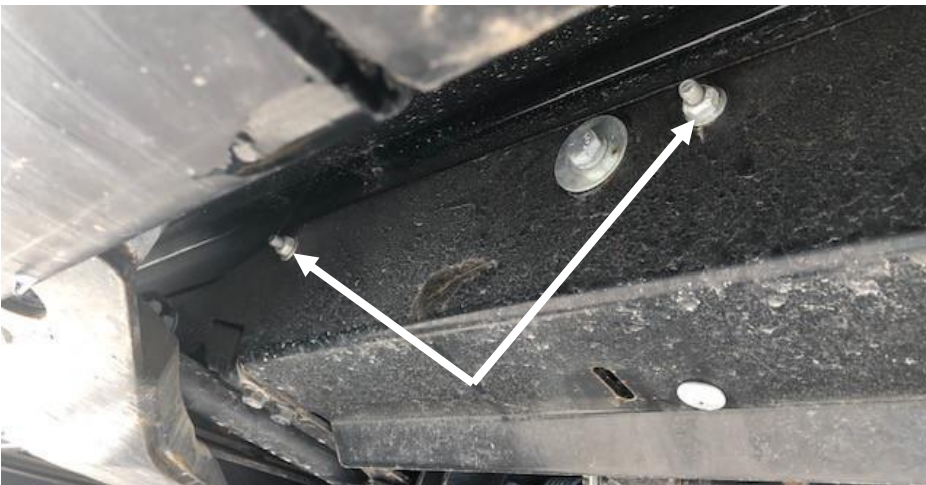


Figure 3

- Slide the slots on the mounting frame with the crop flow fingers, over the bolts on the front feeder deck frame. Tighten the front mounting bolts. Figure 4
- The fingers will allow the crop to flow to the feeder deck draper. Figure 4



Figure 4

Ordering Information:

Qty	Part Number	Description
1	G206829	Crop Flow Kit

Labor Allowance: N/A

NOTE: