

## SERVICE INFORMATION

MANDATORY

FIX ON FAILURE

INFORMATION ONLY 

Ref: SRV - 013- 003

Date: February 26, 2013

Product: UII REEL (*6 BATT 10" TUBE ONLY*) 30' & 36'

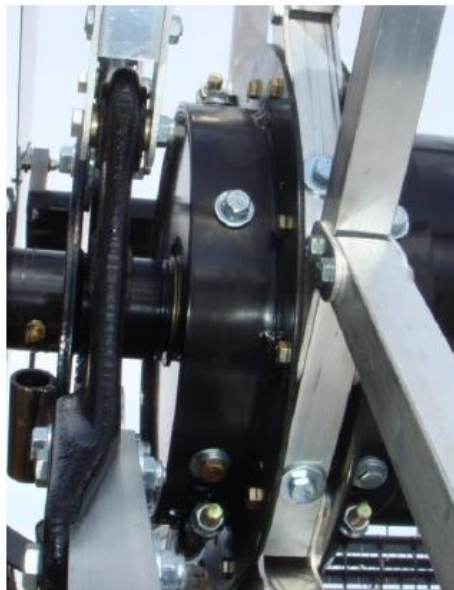
Re: Center tube repair and reinforcement.

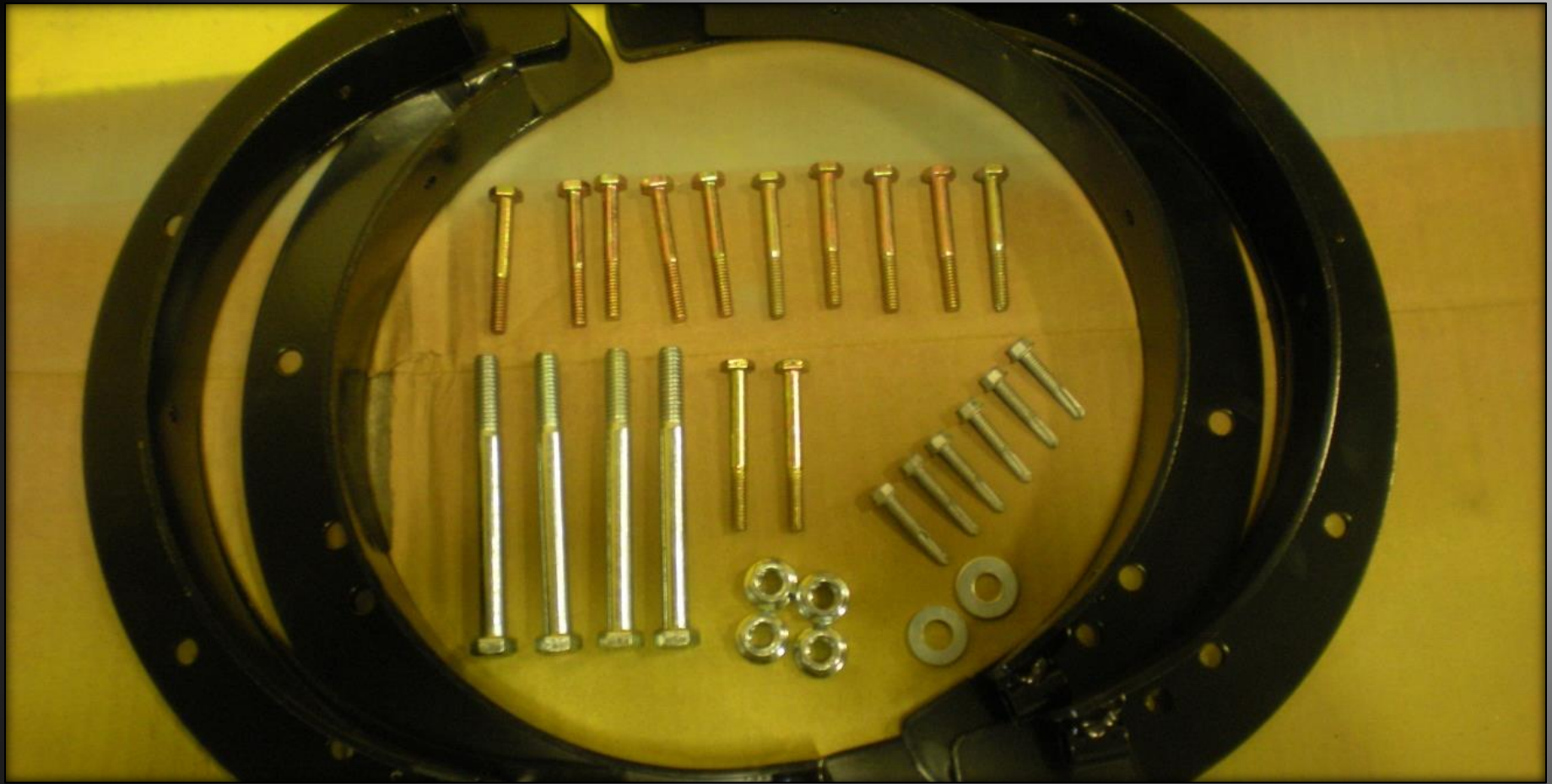
Problem: Hardware retaining the end stars, right and left side will not remain secure.

Solution: Install the reinforcing clamp as per instructions.

Ordering Information: 2 - 94657 REINFORCEMENT CLAMP ASSY-UII STAR

Labor Allowance: N/A



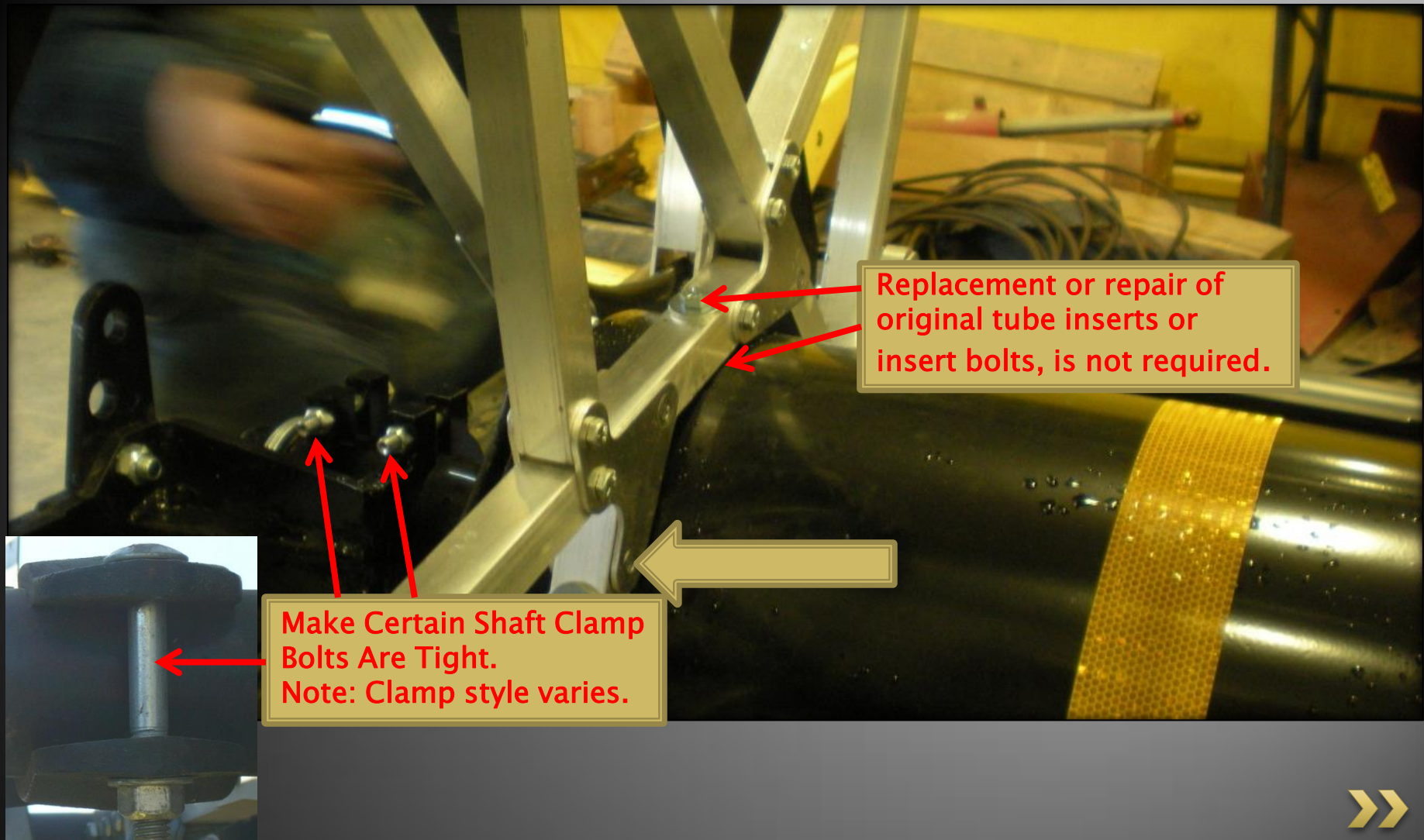


## CENTER SHAFT CLAMP



THESE PARTS REQUIRED FOR ONE END OF THE CENTER TUBE.





REMOVE BOTTOM ROW OF BOLTS NEXT TO THE CENTER TUBE FROM THE REEL ARMS. REUSE NUTS!

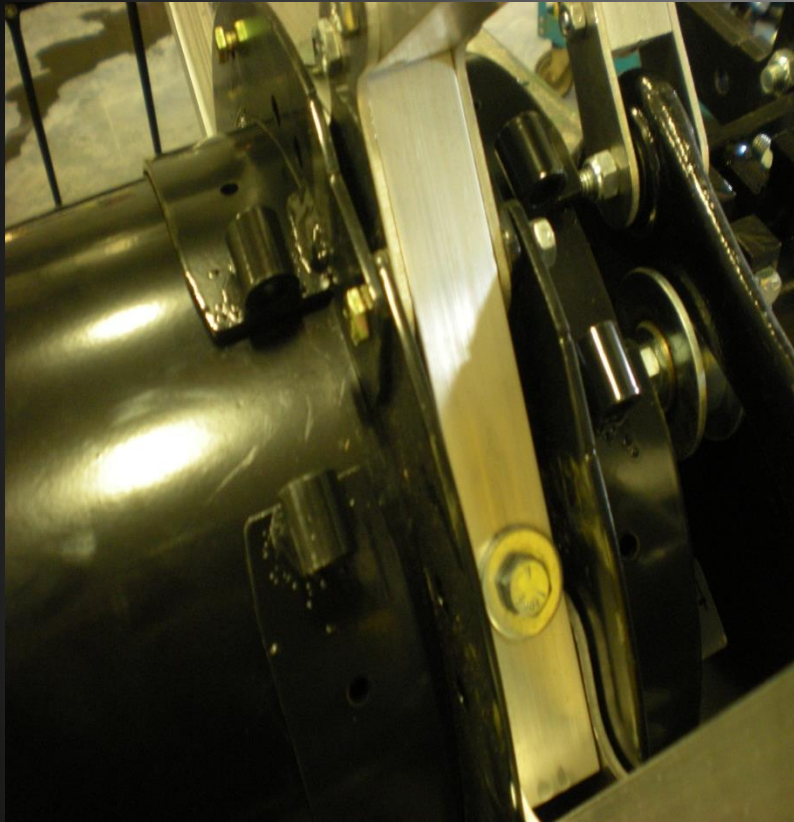


## ADDING RING CLAMPS

ADD RINGS TO EITHER SIDE OF REEL ARMS NEXT TO THE CENTER TUBE. THE HALF RINGS HAVE A SLIGHT OFFSET ON ONE END. OVERLAP ON EACH SIDE AND USE THE LONGER BOLTS ON THE OVERLAP. REPLACE THE REST OF THE BOLTS THROUGH THE RINGS AND THE REEL ARMS. USE SAVED NUTS!





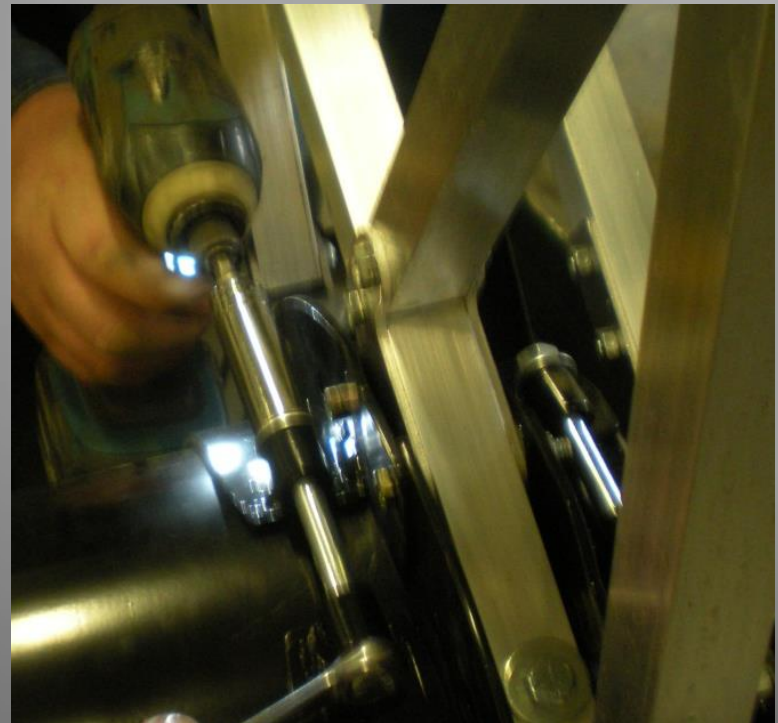
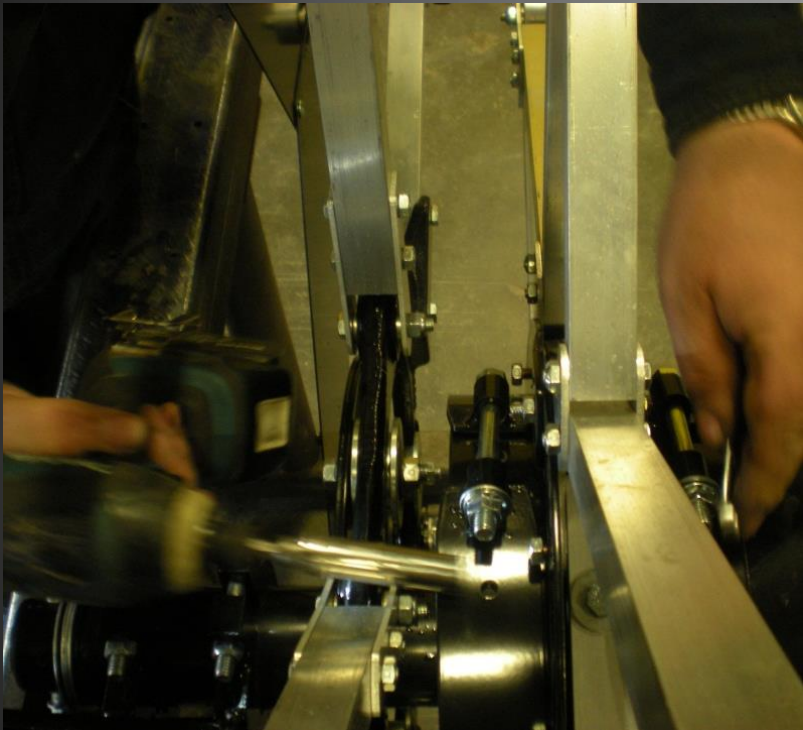




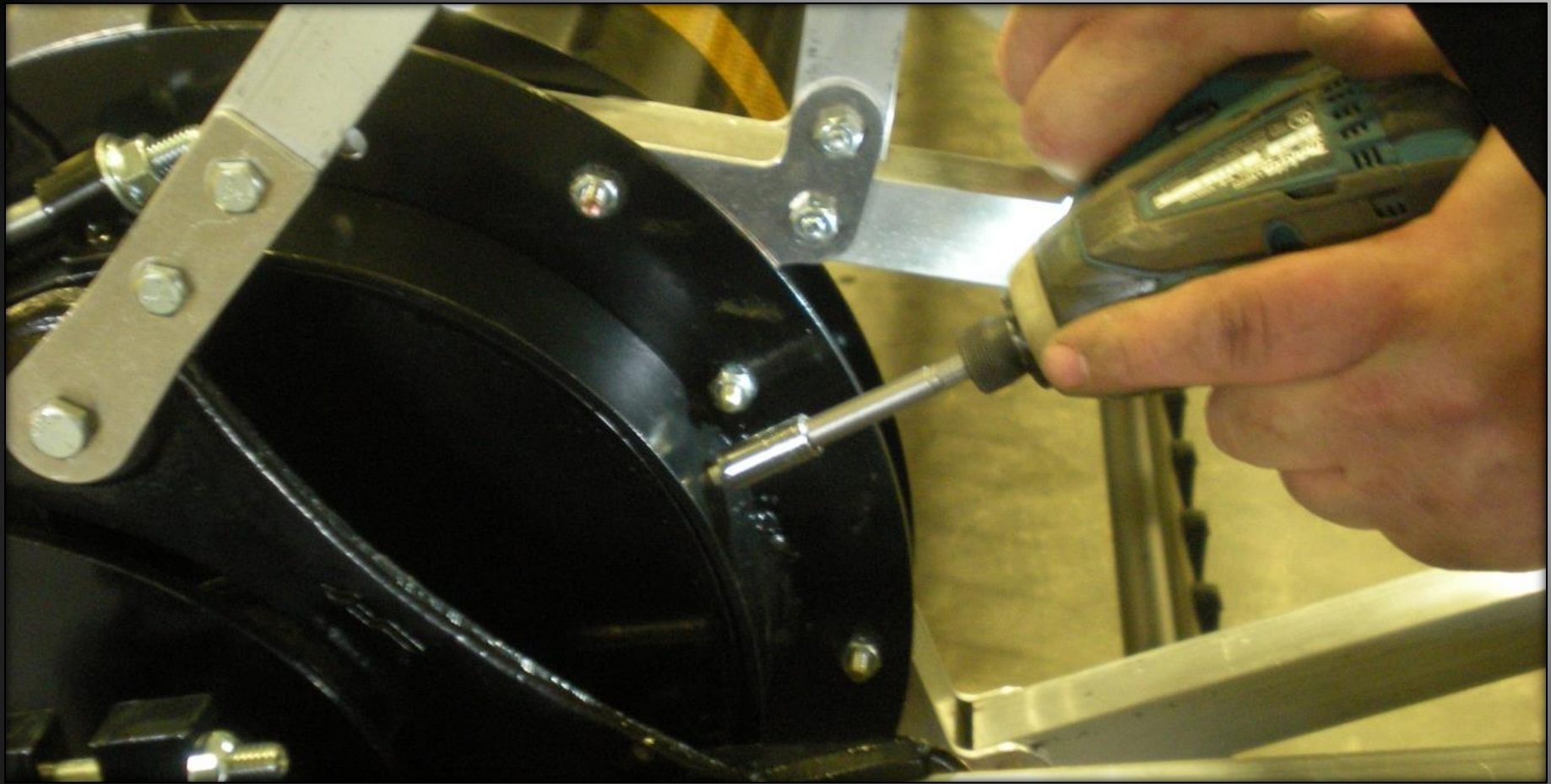
USE THE (4) LARGER BOLTS TO CLAMP THE RINGS TOGETHER. USE FLAT WASHER AND FLANGE NUT PROVIDED IN KIT.







- ▶ TIGHTEN THE 12 REEL ARM CROSS BOLTS.
- ▶ TIGHTEN 4 CLAMP BOLTS.
- ▶ TIGHTEN EXISTING 5/16" BOLTS THAT ATTATCH REEL TUBE STARS TO CENTER SHAFT.



ADD THE SELF TAPPING SCREWS (6 PER SIDE) IN THE HOLES PROVIDED.  
REPEAT ON OPPOSITE END OF THE CENTER TUBE.

