



Honey Bee Manufacturing Ltd.
P.O. Box 120
Frontier, Sask. S0N 0W0
Phone (306) 296-2297
Fax (306) 296-2165
email: rick.norheim@honeybee.ca

SERVICE BULLETIN

MANDATORY	FIX ON FAILURE	INFORMATION ONLY Y
-----------	----------------	--------------------

Ref: SRV - 011-004

Date: Apr. 30, 2011

Product: Grain Belt headers.

Re: Deck Updates for 2008, 2009 and 2010 Honey Grain Belt headers.

Please note: This update pertains to 2008,2009 and 2010 Honey Bee Grain Belt headers only.

Problem: Canvas tearing due to product buildup on deck runner.

Solution: Table modifications as per instructions.

Ordering Information: Order Honey Bee part number as listed below.

Parts are not size specific:	Part no.	Description	Qty.
	G83972	Tab bending tool.	1
	G83970	Spacer for bending tab.	1
	28022	Bolt 1/4" x 7/8 unc Gr. 5	10
	28023	Nut 1/4" anchor	10

Reimbursement: N/A

Labor: N/A

Ref: SRV - 011-004

Deck Update

This set of instructions pertain only to 2008 and 2009 Grain Belt headers. **Please Note:** the steps indicated must be repeated for both the left hand and right hand decks on each machine.



Remove Skid Shoes



Using a 9/16 wrench remove the three nuts that hold the skid shoes in place. Remove the poly skid shoe, the skid shoes will not be reused.

Remove Draper

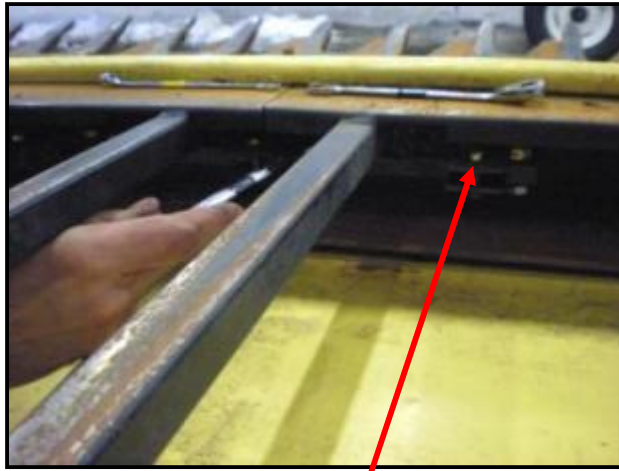


Release draper tension and remove connectors bars.



Draper will be reused.

Deck Connection



Remove all $\frac{1}{4}$ " bolts from tabs.



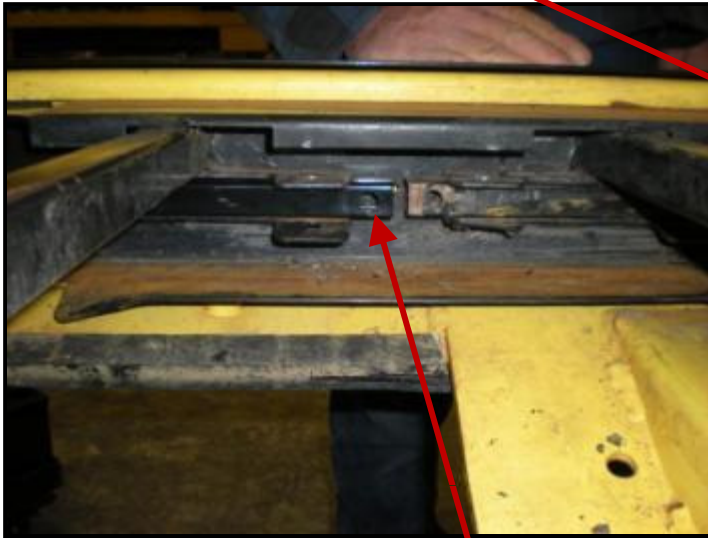
Remove $\frac{3}{4}$ x $\frac{3}{4}$ tubing.



Remove two $\frac{3}{8}$ bolts and nuts from the $\frac{3}{4}$ x $\frac{3}{4}$ sq. tubing.

Reinstall deck connection. (Refer to next page for tab bending procedure.)

Have the clips installed before bending tabs.



Install tubing with holes horizontal.



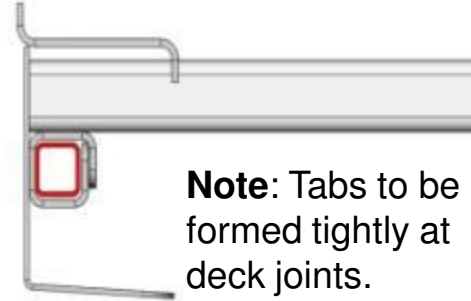
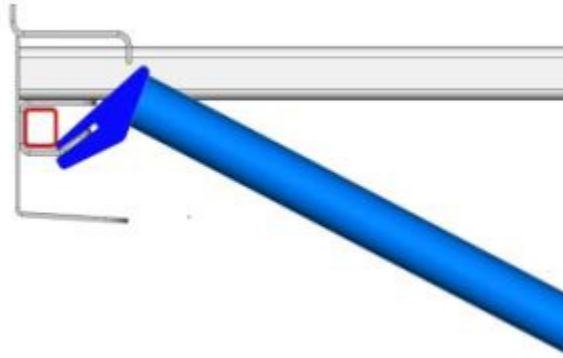
Install threaded clips in tubing.



Install bolts into clips.

Bending Procedure Tabs At Deck Joints

1. Bend bottom tabs up using tool. Using hammer bend tab until it contacts bar.

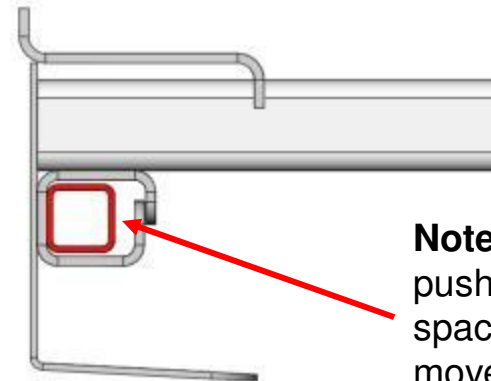
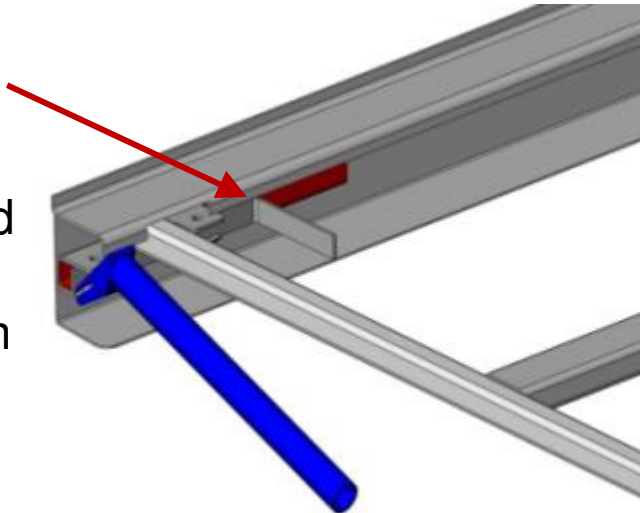


Note: Tabs to be formed tightly at deck joints.

2. Repeat step one for top tab.

Bending Procedure Drive Roller Push Rod Tabs

3. Slide spacer into tabs then bend tabs and finish with hammer.



4. Remove spacer.

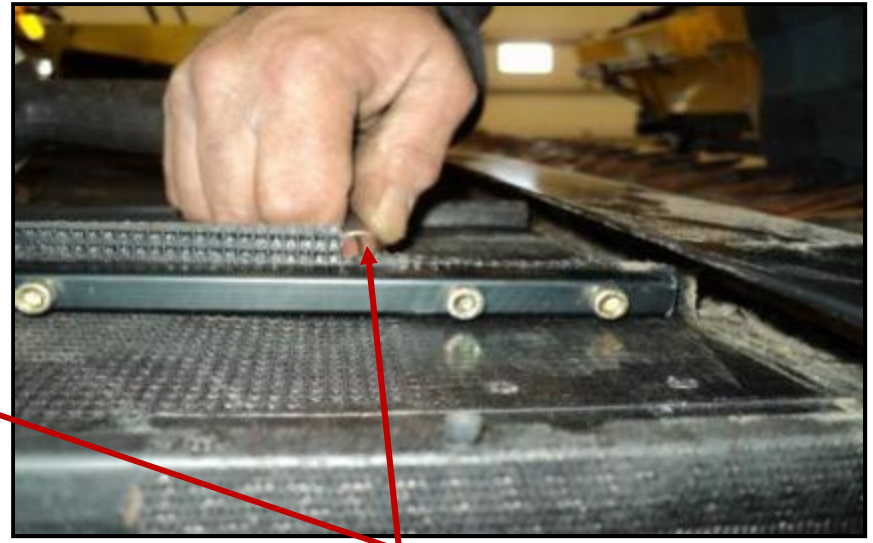
Note: Drive roller push rods require space for pushrod to move freely when tightening canvas.

Repeat this process for all “Tabs” on inside of deck

Reinstall Draper



Reconnect draper connector bars and tighten bolts.
Rounded edge down towards connection.



Trim draper back 4" at front and rear.
Try leave 1/8" draper above connector bar.



When the connector bar bolts have been tightened, trim the excess thread off of the front and rear 2 connector bar bolts.

