



Honey Bee Manufacturing Ltd.  
P.O. Box 120  
Frontier, Sask. S0N 0W0  
Phone (306) 296-2297  
Fax (306) 296-2165  
email: [rick.norheim@honeybee.ca](mailto:rick.norheim@honeybee.ca)

## SERVICE BULLETIN

MANDATORY

Y

FIX ON FAILURE

INFORMATION ONLY

Ref: SRV - 011-001

Date: Mar. 30, 2011

**Product:** Grain Belt Wide Strut Table

**Re:** Deck Updates for 2010 Honey Bee WS tables .

**Please note:** This information pertains to 2010 Honey Bee WS swather tables only.

**Problem:** Canvas tearing due to product buildup on deck runner.

**Solution:** Table modifications as per instructions.

**Ordering Information:** Order Honey Bee part number as listed below.

Kits are size specific:	Part no.	Description	Qty.
	83980	Update kit 18' SSW	1 ea.
	83981	Update kit 21' SSW	1 ea.
	83982	Update kit 21' DSW	1 ea.
	83983	Update kit 25' SSW	1 ea.
	83984	Update kit 25' DSW	1 ea.
	83985	Update kit 30' SSW	1 ea.
	83986	Update kit 30' DSW	1 ea.
	83987	Update kit 36' SSW	1 ea.
	83988	Update kit 36' DSW	1 ea.

**Reimbursement:** Please submit warranty claim as per standard Honey Bee Warranty Policy.

**Labor:** 5 hours.

# Ref: SRV - 011-001

## Deck Update Kit

This set of instructions pertain only to 2010 wide strut swather tables. **Please Note:** the steps indicated must be repeated for both the left hand and right hand decks on each machine.



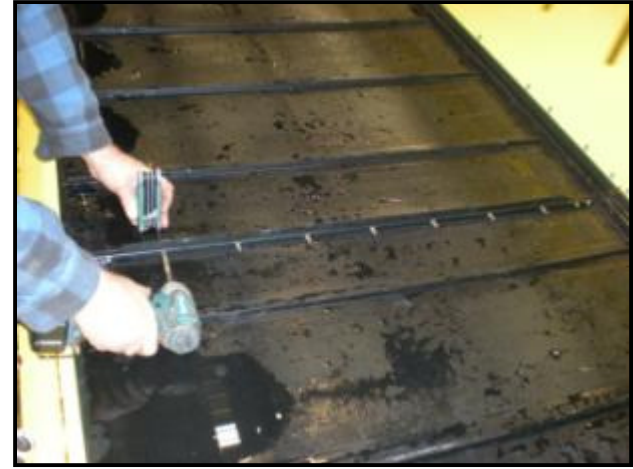
These two  
parts used  
only on SSW  
KITS ONLY

# Remove Skid Shoes



Using a 9/16 wrench remove the three nuts that hold the skid shoes in place. Remove the poly skid shoe, the skid shoes will not be reused.

# Remove Draper



Release draper tension and remove connectors bars.



Draper will be reused.



# Remove drive roller



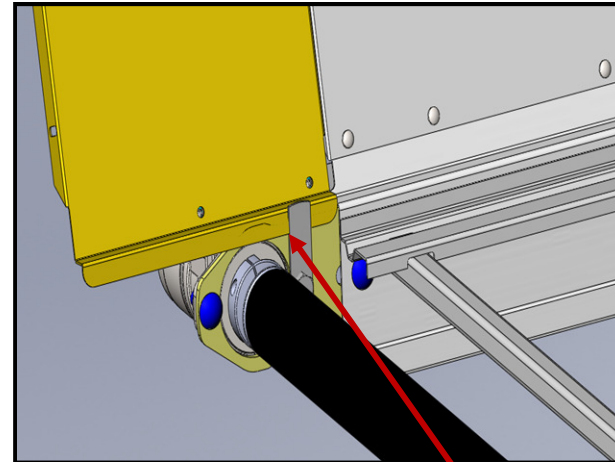
Mark hydraulic hose and remove from motor.



Remove two bolts attaching motor to motor plate.



Remove existing drive roller and motor.



Remove current back panel tab. This tab will not be reused.

## Separation of motor and drive roller

1. Undo two hex bolts.



2. Use pry bar to separate motor from roller.



## Installing Draper motor on new drive roller

1. Apply anti-seize compound to motor shaft.

2. Line up key on shaft with key-way of drive roller.



3. Tap motor onto roller, using a rubber mallet if necessary.

4. Fasten motor to new roller using supplied two bolts/nuts. Bolt Torque 40 ft-lbs.



# Install new roller



Slide roller into motor plate.



Install bolts in motor plate.



Install hydraulics hoses as marked.

Note: when reinstalling drive roller, make certain guide in roller is perfectly in line with guide in deck.



## Removal of idler roller and idler hardware

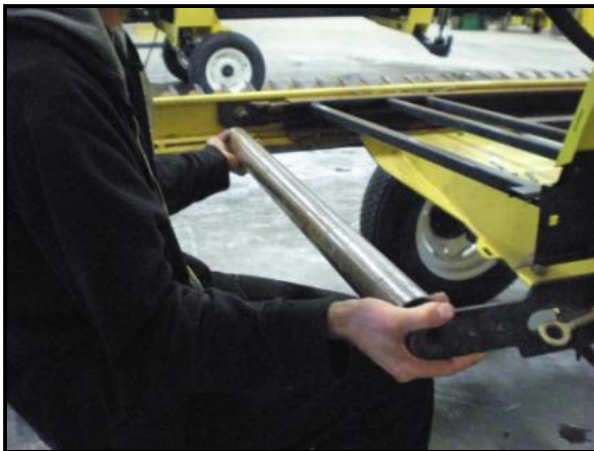


Remove eye bolt adjuster nut.



Loosen and remove bolt attaching old idler bracket to deck.

## Removing idler hardware



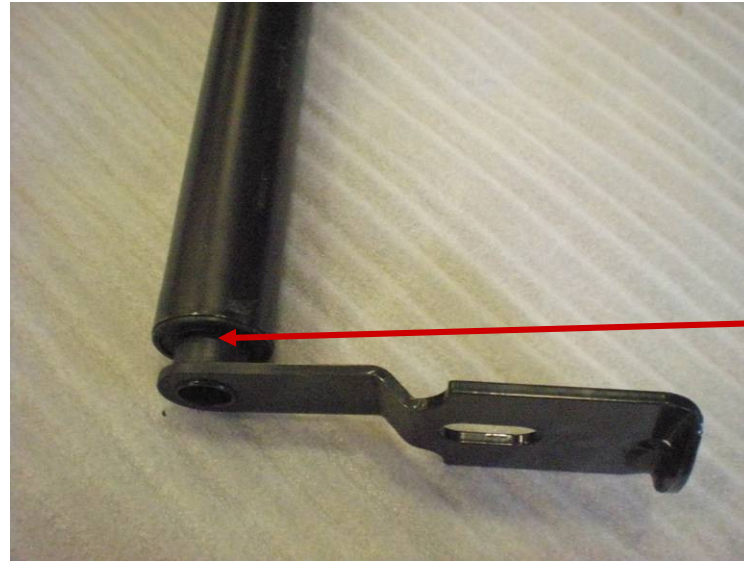
Remove idler roller and bracket.



Remove old idler pushrod.



## Install new idler plate onto idler roller (round end)



Make certain spacer on idler plate is against snap ring.

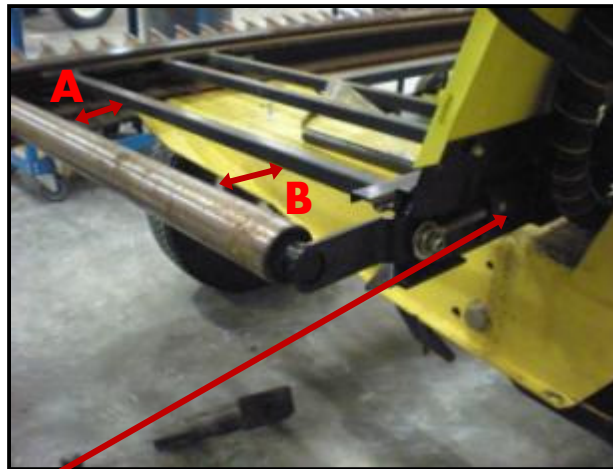
## Install new idler push rod



Note : Make certain top is underneath lip of cutter bar.

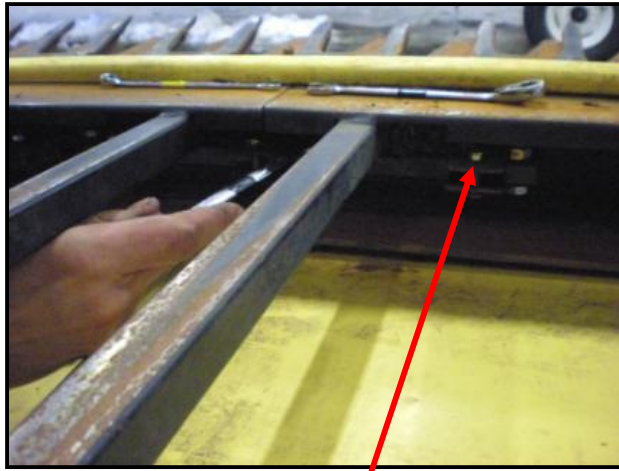
## Install idler roller and new idler roller bracket that was assembled prior.

Hex end of idler roller is installed nearest  
cutter bar.



Using eye bolt adjuster nut ensure idler roller is square to outer 1 x 1  
tubing of the deck frame work, measure both ends of roller.  
Ensure A and B are equal.

# Deck Connection



Remove all  $\frac{1}{4}$ " bolts from tabs.



Remove  $\frac{3}{4}$  x  $\frac{3}{4}$  tubing.

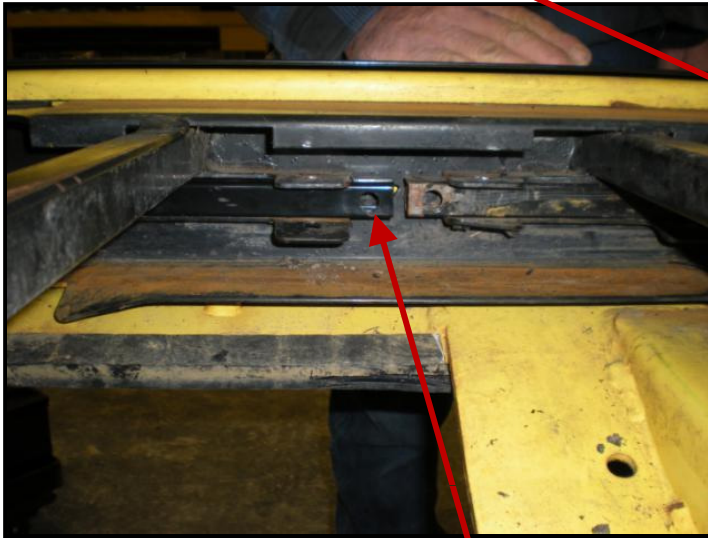


Remove two  $\frac{3}{8}$  bolts and nuts from the  $\frac{3}{4}$  x  $\frac{3}{4}$  sq. tubing.



Reinstall deck connection. (Refer to next page for tab bending procedure.)

Have the clips installed before bending tabs.



Install tubing with holes horizontal.



Install threaded clips in tubing.

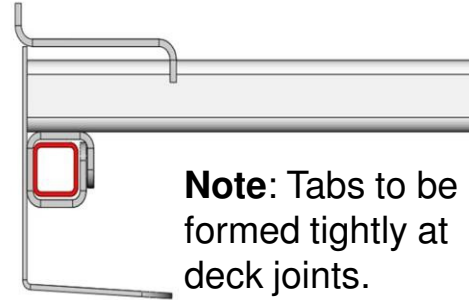
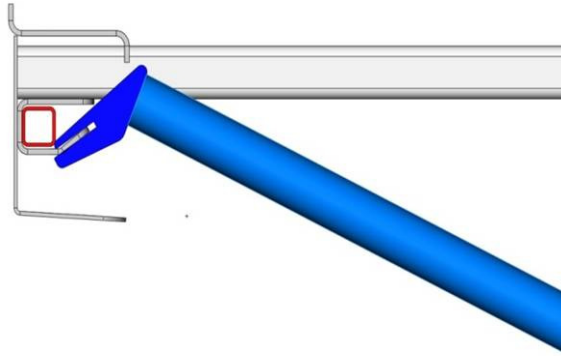


Install bolts into clips.



## Bending Procedure Tabs At Deck Joints

1. Bend bottom tabs up using tool. Using hammer bend tab until it contacts bar.

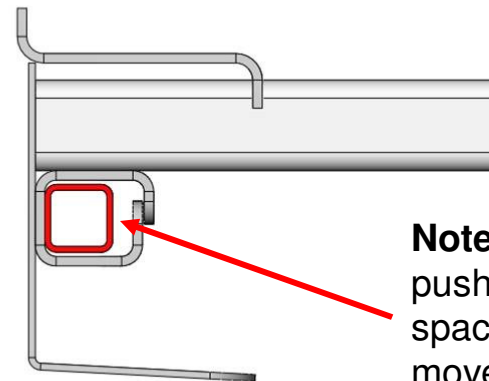
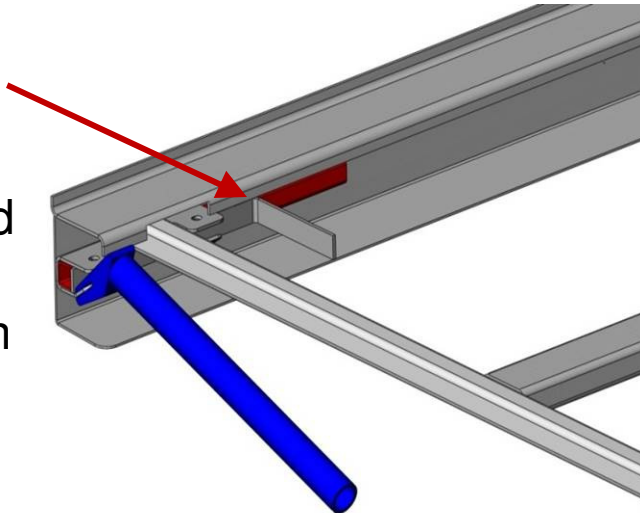


**Note:** Tabs to be formed tightly at deck joints.

2. Repeat step one for top tab.

## Bending Procedure Drive Roller Push Rod Tabs

3. Slide spacer into tabs then bend tabs and finish with hammer.



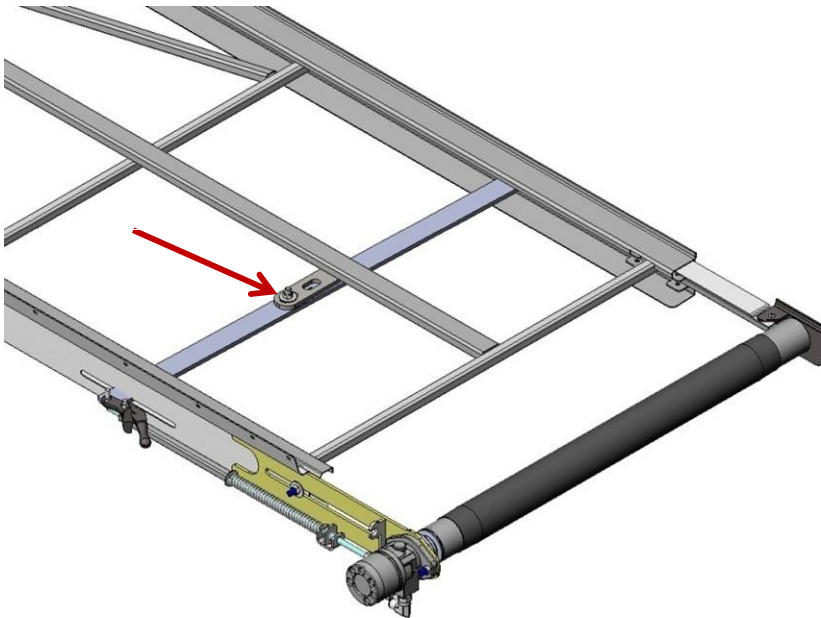
4. Remove spacer.

**Note:** Drive roller push rods require space for pushrod to move freely when tightening canvas.

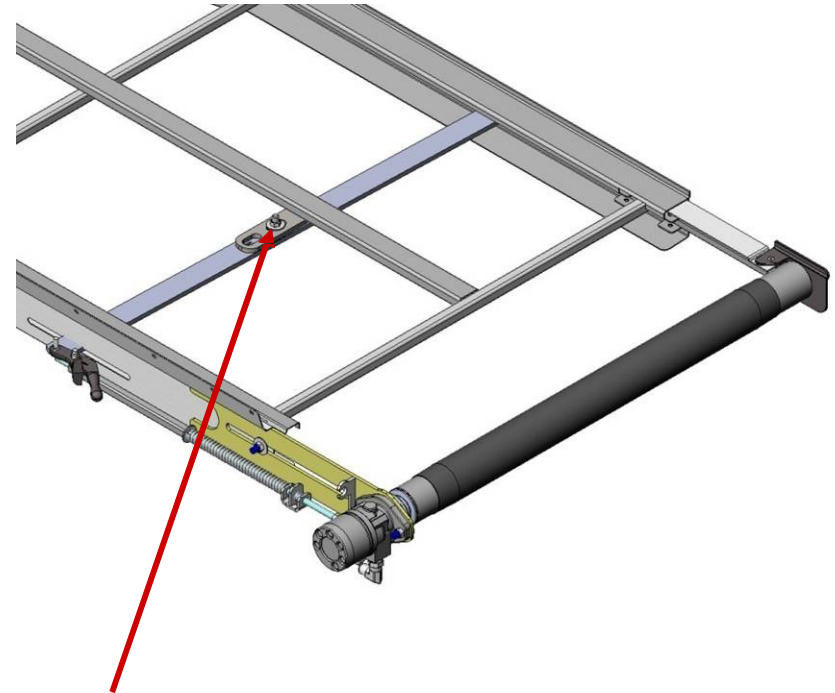
**Repeat this process for all “Tabs” on inside of deck**

# Change pivot position of sway bar

Offset position



Center position



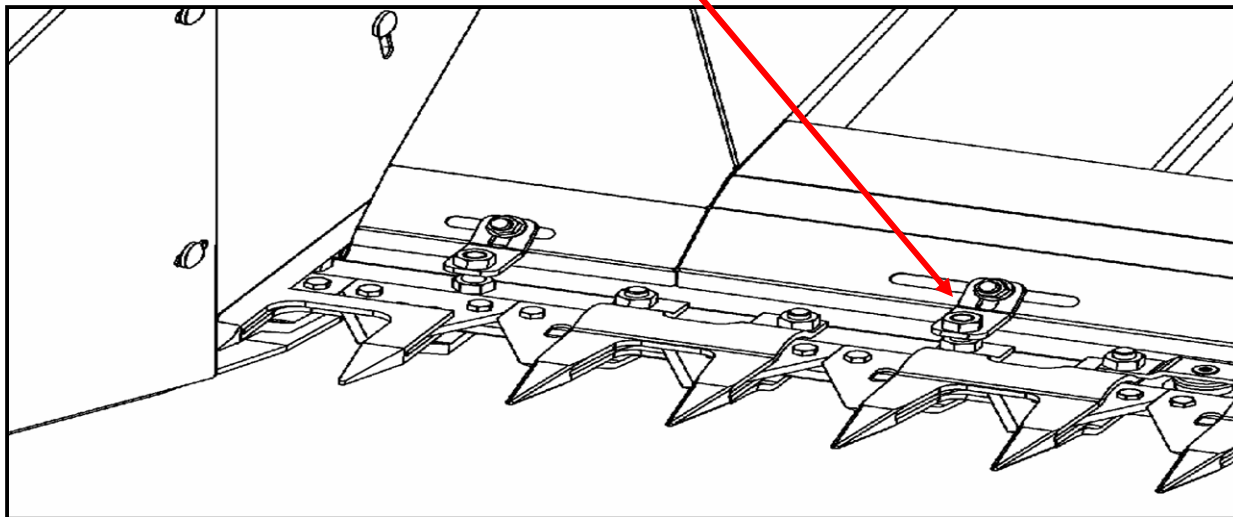
Move Bolt in Sway bar from offset hole to center hole.

# Remove Inner Deflector and Hay guard

Remove nut holding hay guard clip to knife guards (do this for the whole length of machine).

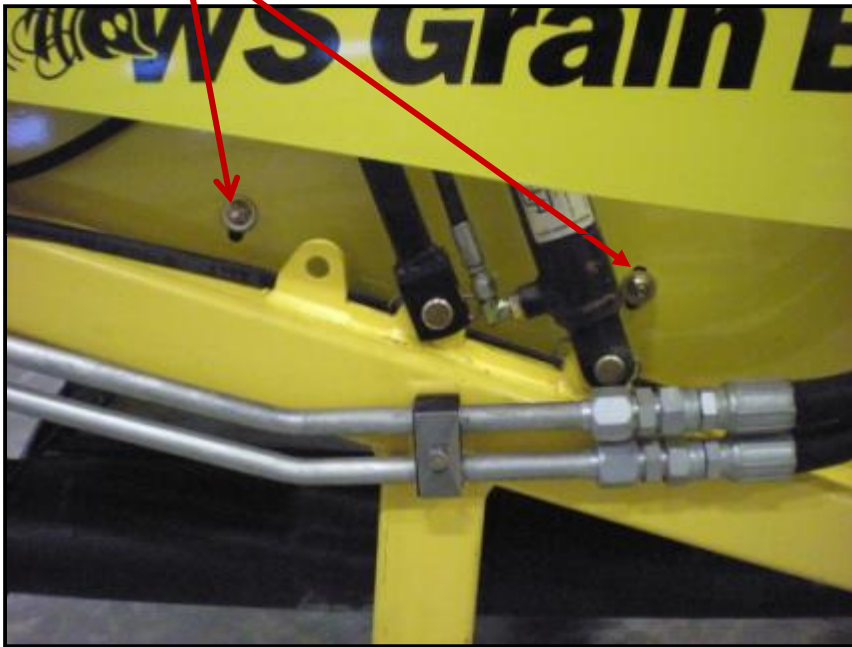


Remove all Hay Guard.



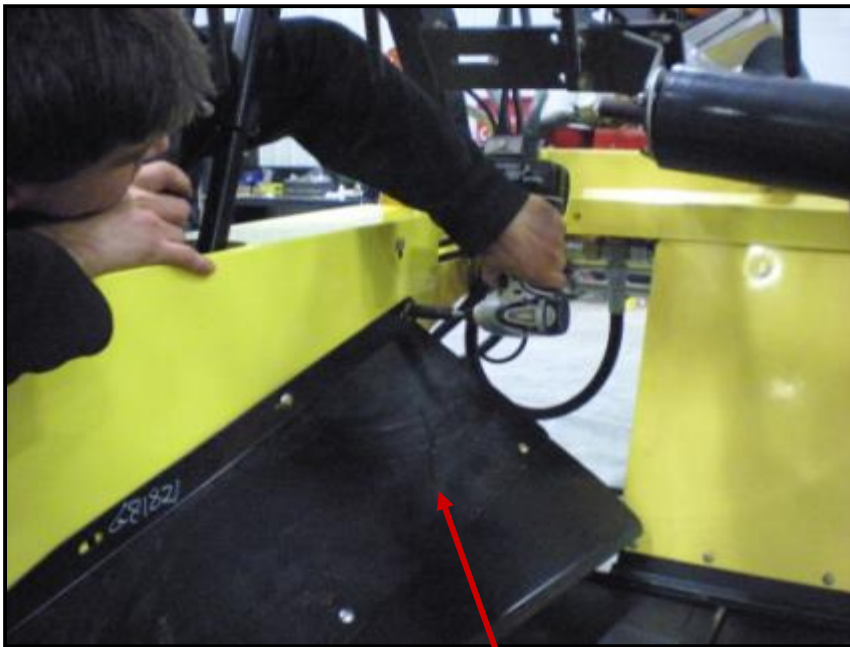
# Remove extension deflector

Remove two bolts and nuts holding deflector extension to crop deflector. These bolts, washers and nuts will be reused.

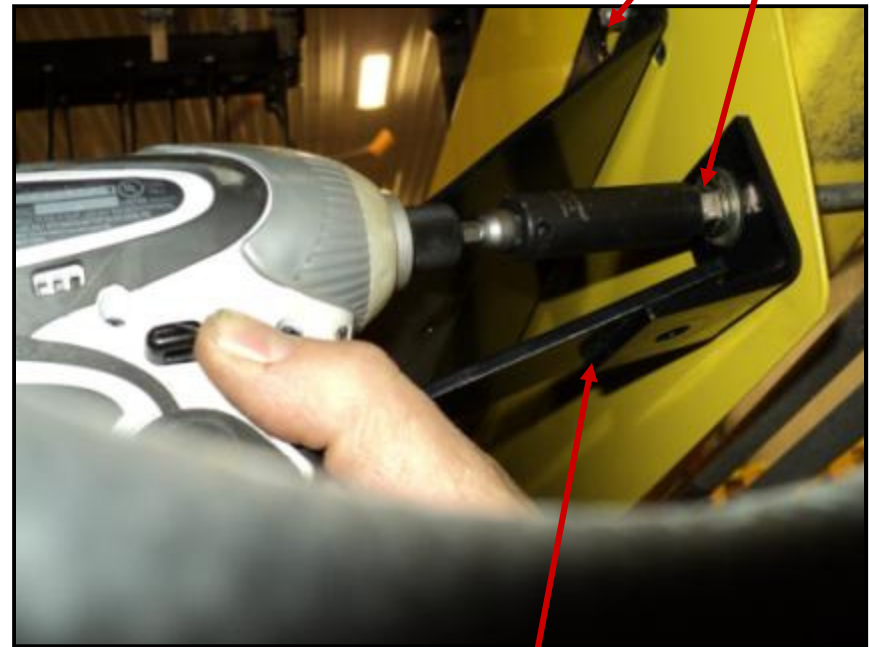




Remove two nuts at rear of extension, and remove extension bracket.  
These two nuts and washers will be reused.



Extension will not be reused.

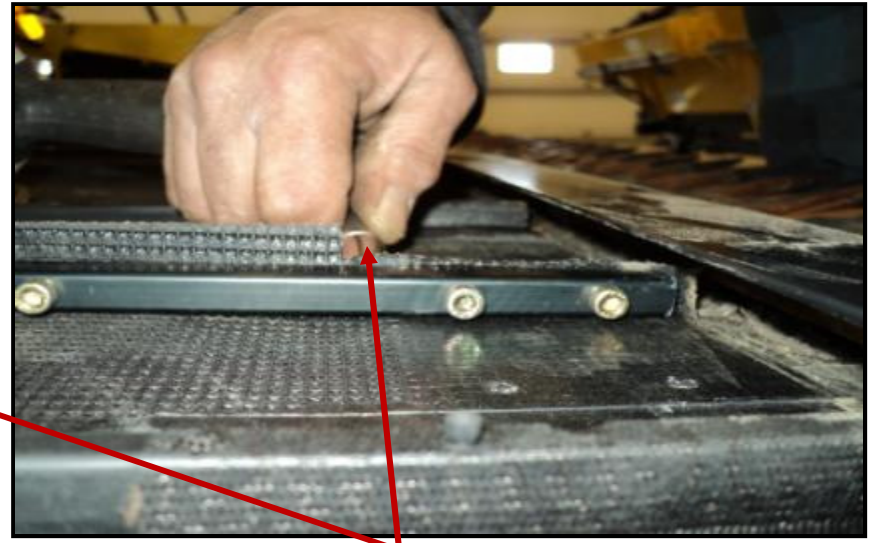


Brackets will not be reused.

# Reinstall Draper



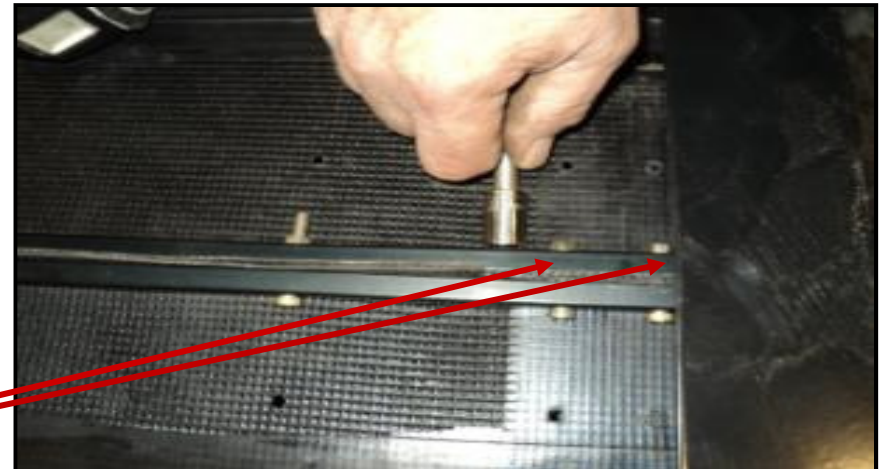
Reconnect draper connector bars and tighten bolts. Rounded edge down towards connection.



Trim draper back 4" at front and rear. Try leave 1/8" draper above connector bar.



When the connector bar bolts have been tightened, trim the excess thread off of the front and rear 2 connector bar bolts.



## Replace with supplied hay guard



1. Centre new hay guard between crop deflectors.

Note: if there are 2 different lengths of hay guard, the short piece is used in the middle.

2. Center punch holes for installation of self drilling screws. Drill 1/8" pilot hole if preferred

Note: a drill for threading self tapping bolts into cutter bar is more efficient than an impact.



# Install New Inner Deflectors

1. Reverse steps on page 15 to install new deflector. Note: Leave four nuts loose until step 2 is complete then tighten four nuts.

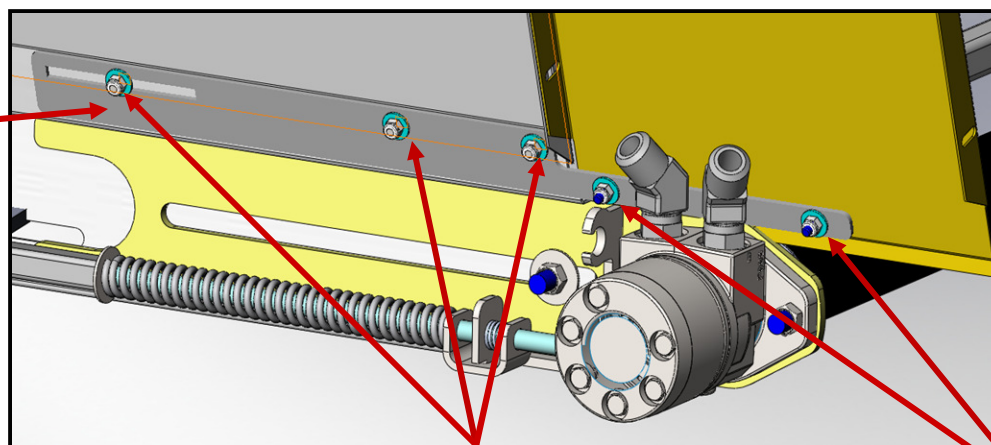
Note: rear brackets from old deflector will not be reused.

2. Place new extension over hay guard and install self – drilling screw at the point where the 2 slots form a hole.



## Install New Back Panel Brace

Reinforcement strap not required for double swath units.



Install New back panel reinforcement strap.

Note: use reinforcement strap as template to drill two  $\frac{1}{4}$ " holes in back panel extension to install strap.